

OCT 2020

VOL-17 | NOT FOR SALE

PORTERPRESS

YEARS OF EXPERIENCE

SEE MORE | P 20-21

*"WE KNOW THAT PORTERS WILL
LOOK AFTER US AND OUR
MACHINES SO WE CAN CONTINUE
TO GET THE JOB DONE"*



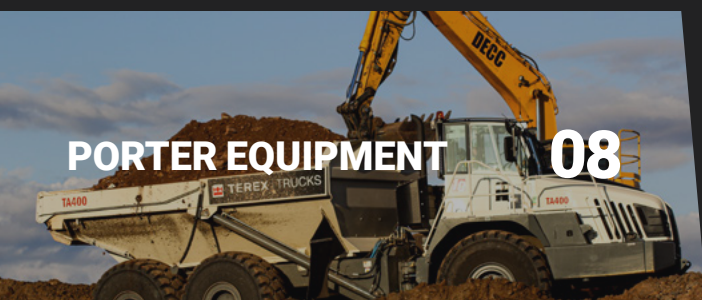
NEW KID ON THE BLOCK

SEE MORE | P 8-11





RECENT VIDEOS 22



PORTER EQUIPMENT 08



PORTER MECHANICAL 06



MEET THE TEAM 04



24 PORTER HIRE



28 PORTER HAULAGE



30 PORTER PARTS



34 RECENT DELIVERIES



While the world slowly returns to normal, Porter Group faces yet more change as this year draws to a close. As a multi-faceted company with many moving parts, our Board of Directors have moved to implement a new streamlined management structure to ensure cohesion and cooperation across the group as a whole. This decision was made with our customers at top of mind, and we look forward to being able to provide a more responsive, homogenous experience across every aspect of our business. We envision this streamlined approach to upper management will further solidify the Porter Group as the comprehensive heavy machinery solution across Oceania; improving our inhouse communication and operations to improve customer experience.

With this exciting change to our internal landscape comes increasingly exciting news from the regions. In New Zealand, activity has increased across the board since mid-year and there seems to be some real positivity and confidence coming back into the market as we head into the busy season. With the lengthy election process soon to be behind us, we expect the industry to continue uninterrupted as the country pursues a prompt recovery from the impacts of COVID-19.

Despite extended lockdown periods, particularly in the state of Victoria, our Australian operation continues to go from strength to strength in both sales and rental. As business has slowly returned to normal our teams have been ready, willing and able to assist our customers return to production.

With the budget reflecting some solid economic recovery measures focused on housing and infrastructure, Porter Group is well positioned for the remainder of the year and looks forward to 2021.

Porter Equipment has seen continued interest in the Hyundai HX models, with sales across the construction, quarrying and forestry industries leaving a measurable footprint on the market. The immense enthusiasm we have seen for these machines across our Marketing channels bodes well for future sales, and we look forward to further demonstrating their benefits to existing and potential customers.

In the equipment rental space, Porter Hire Australia is tracking well, securing some really strong long-term project hires in New South Wales. As the Australian hire customer base continues to grow, we are adding more capital investment to the fleet to ensure continued success for the group and our customers.

Casting our view forward, we're excited about the remainder of 2020 and what lies ahead. We envision the shift in our management will leave us well positioned to meet the market head on and further build on our already strong customer relationships. We would like to take this opportunity to thank those customers for their continued support throughout what has been a challenging year for all. We wish you all a productive year's end and look forward to a prosperous 2021.

Darren Ralph
Porter Group - Chief Operating Officer



MEET *the* TEAM



TONY MCCLAY (TONTO)

**Used Equipment Manager
Porter Equipment - Hamilton**

Tonto has been with the group for over 20 years. His role in the group is to oversee used equipment refurbishment work, ensuring machines are up and running and ready for sale. He enjoys the challenge of working with a vast product range and finds dealing with lots of people rewarding. Outside of work Tonto enjoys spending time with his family, hunting and bowfishing.



RITH LORK (BAMBOO)

**Engineering Lead Hand
Porter Mechanical - Hamilton**

Rith has been with the group for 27 years! Before working with Porter Mechanic, he was a panel beater. In his role, Rith looks after new and used machine fabrication, modification and installs. He likes working alongside some good mates and finds Porter Group a great company to work for. His hobbies include camping, fishing and spending time with family.



DANIELLE PACHNATZ

**Credit/Compliance Manager
Porter Finance - Hamilton**

Danielle joined the group 7 months ago. Her role is to oversee all credit processing for Australia. She ensures Porter Finance meets all legal obligations as a financier and has recently started working with general credit approvals as well. Danielle says she is enjoying the challenge of working for a larger company and is learning new things every day. Outside of work she likes hiking and spend time with family at the beach.



DUANE JOUBERT

**Production Manager
Porter Mechanical - Christchurch**

Duane joined the group 10 months ago. His role is to manage the Christchurch workshop, ensuring to keep productivity up and assisting the sales team with builds on new and used gear. Before working for the group, he worked in the gold mining industry for 14 years. Duane enjoys the interaction with different work environments that comes with his role, and outside of work he enjoys keeping physically fit through weight training.



SINEAD MCCURDY

**Credit Manager
Porter Group - Hamilton**

Sinead started working with the group during lockdown in April. Her role within the group is to ensure customers are paying their invoices on time and helping to resolve any queries they may have. Sinead's favorite part of her role is her workmates, she says her team is fantastic and very easy to work with. Outside of office hours, Sinead likes spending time outdoors with her pup.



JAMES THOMAS

**Parts Manager
Porter Parts - Whangarei**

James has been with the group for just over 3 months. With a background in the parts industry, James' role is to build customer relations in Northland and support them with any and all parts requirements. His time outside the group is spent looking after his two young daughters and seven cars.



MARC STEWARD

**Parts Interpreter
Porter Equipment - Brisbane**

Marc has only been with the group for a few weeks, but is already enjoying working alongside his supportive team. His role is to provide solid sale support to customers, minimizing downtime. His time outside of work is spent playing golf or watching rugby.



SAJEEVE VISHNAND

**Parts Manager
Porter Parts - Manukau**

Sajeeve has been with the group for 4 months. Before his current role he has worked in the parts industry for over 20 years, moving to New Zealand from Africa in 2017. His role is to ensure Porter Parts offers the customer a one stop shop solution. His interests include spending time with his family outdoors, including coaching his son in cricket.



AT YOUR SERVICE

Porter Mechanical provides after-market support, with a diverse range of service capabilities including quick response repairs, routine maintenance, preventative maintenance, service agreements, product training, induction courses and remanufacturing. Highly trained technicians and service teams are part of a network ensuring that customers' construction machinery downtime is kept to a minimum, reducing costs and increasing productivity.

0800 650 600

MECHANICAL@
PORTERCE.COM



17 BRANCHES NATIONWIDE

Porter Mechanical is backed by its own dedicated Product Support Division, providers of expert advice and factory-backed technical support for all of Porter Group's brands and products. Porter Mechanical is authorised, trained and accredited by the manufacturers to repair and service the engines, transmissions and hydraulic components used in franchise equipment.

After sales performance is supported by extensive resources such as computerised diagnostic systems, a large fleet of mobile response units, dedicated service vehicles, panel and paint bays, remanufacturing facilities, welding fabrication and engineering workshops.



MIKE RADEMEYER

Albany Service
Manager



FRANCOIS ENGELBRECHT

Workshop Heavy Diesel
Technician



WILLEM BROODRYK

Field Service Heavy
Diesel Technician



ANTON CURRIE

Field Service
Technician



TAYLOR LOVE

Workshop Diesel
Technician



THOMAS VORSTER

Manukau Service
Manager



KAI CLAPHAM

Apprentice Heavy
Diesel Mechanic



ANDRE NAGEL

Field Service
Manager

NEW KID ON THE BLOCK

THE MIGHTY MADILL 124B

Gisborne is the first place in the world to see the sun each day. Now the iconic east coast location is also home to the world's first 57-tonne Madill 124B Swing Yarder.



About as heavy-duty as it gets in the forestry sphere, the fully interlocking swing yarder uses a system of cables to swing or fly logs from the stump to the skid site, where logs are then stripped and prepared for transport. Freshly arrived from Canada, the Madill 124B is perched atop the steep terrain of an Aratu Forests site, with the closest town Tolaga Bay. Just getting to the site presents a challenge in itself. Fortunately, Porter Equipment territory manager Roger Pedersen was behind the wheel; this is no terrain for the faint-hearted or inexperienced and I was more than happy to be riding shotgun. Thanks to the mighty 60ft yarding boom, it's not too difficult to find the new (but huge) kid on the block. The 124B is already hard at work, with enormous logs flying across a gully helped by the 2550ft main drum capacity, boasting a maximum pull of 92,380lbs with a top speed of 2880ft/min. Widely regarded as a game-changer for the industry as well as all the usual hardware a machine like this comes with, it's the innovative touchscreen-based oper-

ating system, which is the real attention grabber. It has garnered much interest from industry experts around the world. This is the first new Madill of its kind without analogue gauges and manual air systems. Everything is worked via the brand spanking new electronic controls and touchscreen, which can be individually programmed and tailored to a specific operator. All of this impressive capability is wrapped in a highly durable package—a key factor when considering the demanding pressure machinery like this operates under.

LEADER OF THE PACK Owner of this significant piece of kit is Ray Flavell of Flavell Logging. A long-time leader within the industry, Ray is no stranger to adapting to changing innovations and technology. He's always keen to remain at the forefront of the logging industry when it comes to new methods and machines. With some familiarity with the Madill brand (having already invested in a Madill 123, which is being refurbished now that its big brother has arrived), Ray was

intrigued at the level of technology the new model promised, so earlier this year took a trip to Canada to personally view the 124B being built. Madill is distributed and supported by Porter Equipment. The company has a long history with Ray and has supplied him a significant inventory of forestry machinery, including more than 25 Hyundai excavators over the years. "Madill has an excellent reputation for well built and well-performing machinery," says Ray. "All told, I've had about six pieces of Madill machinery, from towers to swing yarders." The 124B is Ray's third Madill swing yarder and added to it featuring the latest innovations, comes the satisfaction of being the first in the world to try the new machine and a sense of pride in bringing it to New Zealand. It was the technology that first attracted Ray to the Madill 124B. "Even though I'm an old-school operator in many ways, I'm also always trying to keep up with and move with the times, otherwise, you get left behind. Everything is going the way of an increased reliance on computerisation."

Aaron Wallis with the latest addition to the fleet.

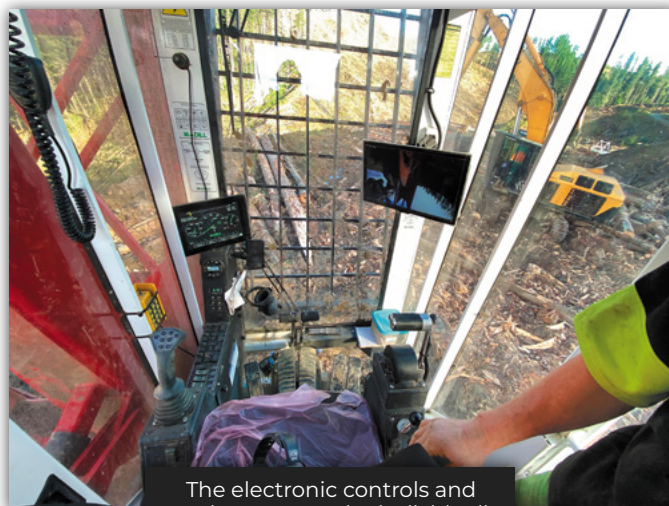


FROM SMALL BEGINNINGS With 53 years' experience in the logging business, Flavell Logging has come a long way since the early days when Ray started off with just a small tractor and the support of his wife. "We just slowly worked away, slowly built our reputation, proved ourselves, and grew the business." Ray's three daughters have all had some involvement over the years also, including doing payroll and accounts. It's fair to say that forestry runs in Ray's blood; his dad was in the game as well as his two brothers. "They are all loggers, so I grew up in it and didn't have a lot of choices really," he says. "It's a hard industry, with a lot of lows and highs, and you've really got to be prepared to ride out the low patches and there are plenty of them. Despite the challenges, I can honestly say I've enjoyed my life in forestry; it's given me a good lifestyle and it's good, honest hard work."

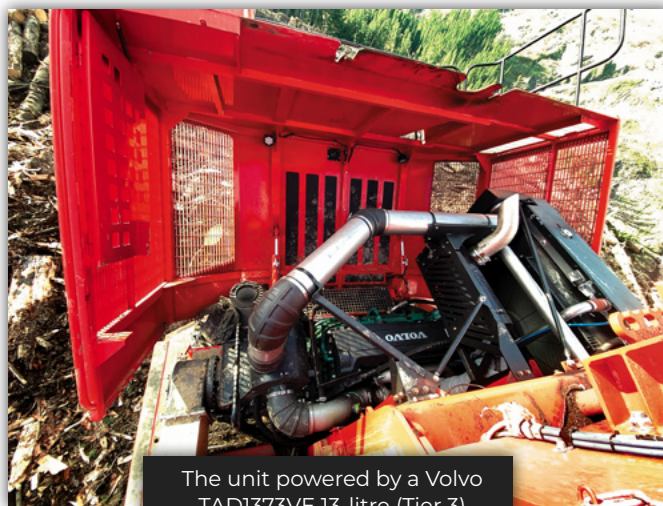
SPECIAL OPERATOR With such a highly complex machine representing such significant investment, ensuring the newest addition to his fleet is in capable hands is vitally important. One of Ray's top operators is Aaron Wallis and crew manager of the group working with the new Madill 124B and to date, the sole driver of the new Madill 124B. After his early years spent in the farming industry, Aaron made the move to forestry about 25 years ago, in his early 20s (motivated by some of his mates also working there). Having clocked up plenty of hours in the Madill 123, much about the upgraded 124B machine is familiar, with the touchscreen system a new learning experience.

PAYING IT FORWARD Such is his passion for the industry, Ray is an avid believer in paying it forward and has quietly provided financial assistance and mentoring to many young guys in his crew, helping them set up on their own and helping ensure their future in the industry. "Every time I help one of the guys into their own business, I tell them I hope one day they will pay it forward to someone else. It gives me pleasure to put my faith into some of these hard-working guys and to see them succeed makes it worth it."

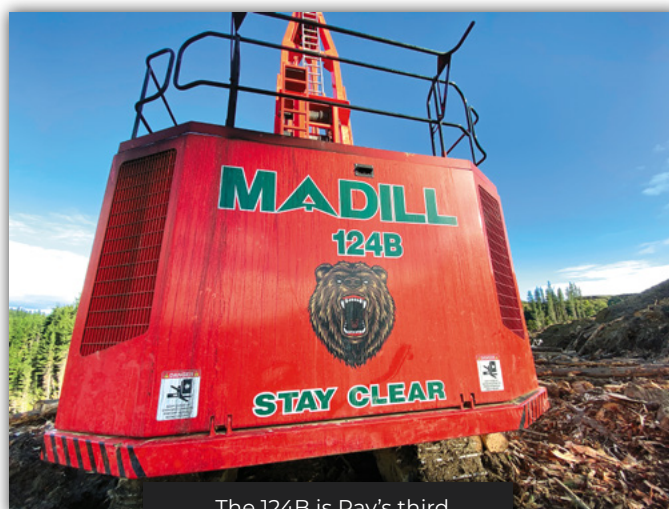
POWER-PACKED Technology aside, another significant change from earlier Madill models sees this unit powered by a Volvo TAD1373VE 13-litre (Tier 3) engine, mated to an Allison 4500 OFS Fully Automatic Operation transmission with auto lock-up torque converter. Cranking out 468hp at 1900rpm, there are five forward speeds and one reverse speed. The undercarriage is set on 11 track rollers and 52 track shoes (711mm wide) per side, and a fully hydraulic deck opens up flat for easy walk around access to the engine. Featuring Madill's own regenerative winch design with waterfall drum arrangement consisting of independent main drums offering up equal reversing, Aaron is a particular fan of the small feature details such as an impressive rear and front cameras, as well as the more obvious attributes. Continued on next page....



The electronic controls and touchscreen can be individually programmed and tailored to a specific operator.



The unit powered by a Volvo TAD1373VE 13-litre (Tier 3) engine.



The 124B is Ray's third Madill swing yarder.

POWER-PACKED CONTINUED...

"It's a really well-thought-out machine and I'm looking forward to getting up to 100% in terms of being able to utilise all of the technology it's equipped with." He's also keen on safety features such as the forward sloped design of the cab for improved outward vision (15-foot eye level) and the heavy-duty FOPS/OPS grill protection. The rear entry cab is climate controlled and Aaron says the hand and touch screen controls have been well thought out for convenient operator placement. All the manual valves for things such as swing, boom hoist, guylines, and strawdrum are now electronic, and there's a gear pump with valves for pilot controls and pull clutches. Joystick buttons are programmable and thanks to the large touchscreen, engine, transmission, and winch information can be easily viewed. Remote camera technology allows the operator to keep a constant eye on the cable over the drop-off, offering a good view of what's happening between the machine and the opposite slope. Other new features include a line counter, automatic cooling fan control, updated air controls, winch spooling function, electronic swing controls, alarm monitoring, and more. A tilt sensor and slew ring sensor are also installed for future expansion plans. "We'll be able to further improve both capacity and fuel economy" says Ray, "but even now, I already think I can say it has lived up to all of my expectations and is pulling some big numbers. I'm confident it's a machine that will be around and proving its worth for a long, long time."

The 124B boasts a maximum pull of 92,380lbs with a top speed of 2880ft/min



SPACE RACE

HYUNDAI TELESCOPIC BOOM



**THIS TELESCOPIC BOOM GIVES
THE DIGGER EXTRA ABILITIES
UNDERNEATH IT.**

"We have to be very systematic
with every project: you need to
be thinking 20 steps ahead all
the time."



When you're deconstructing a high-rise building, you're working in three dimensions and constantly thinking dozens of steps ahead. Add to this the restrictive nature of an inner-city work zone and a ticking clock. With all the skill in the world, clever machine tech still plays a part, as it does here with this Hyundai R320LC-9TS and its telescopic boom.



Forget the grand scale of the sorts of top tier demolition and excavation projects that DECC engages on all over the East Coast. If you're looking at the project as a whole, you're not seeing the nitty gritty: the stuff that really shows this company's expertise is often at a micro, rather than a macro, level.

Because it's the DECC team's ability to successfully and safely deconstruct all manner of structures from within complex, often confined, workspaces where the skill really shows through.

"As multi-story urban development has increased and larger cities have seen renewed focus on the centre of town, a fair portion of our work has been CBD-based in recent years," says DECC director Frank Lombardi. "This means that we're often faced with large-scale jobs on, relatively speaking, small-scale sites – certainly in terms of their limited access, a large population of neighbours nearby forcing certain operational restrictions, and the ability to place the machines we need to do the job where they're ideally suited."

You need plenty of experience to bring such structures down safely and on time. DECC is a privately owned company with senior management holding a combined 75 years' worth of experience in not only demolition, but site decontamination and stabilisation, all manner of civil and earthworks contracting including site retention, stormwater and road construction, and project consultation.

With a presence across New South Wales, ACT and Queensland, DECC – which was founded in 2007 by co-director Vince Di Falco – will be a familiar sight on demolition projects that span many sectors and environments: industrial plants, commercial high rise buildings, hospitals, education precincts, petrochemical storage facilities, chimneys and silos, bridges, piers and other marine structures. But here in the middle of Sydney's teeming city centre, hemmed in on all sides by office blocks and apartments: this is where the DECC team work to maximise their efficiency in a restrictive work zone. Bringing a building down is like a massive 3D puzzle, where Lombardi and his crew must be able to see the process from every angle.



Due to the strict restrictions on site, this piece of machinery provides invaluable flexibility.



MAN AND MACHINE It takes real human skill. But, if you can get a helping hand to deliver a clean site for the client on deadline from some clever machinery, then all the better. The big 33-ton Hyundai R320LC-9TS isn't, in itself, anything out of the ordinary. Offering up the Korean manufacturer's usual blend of comfortable cab ergonomics and outward vision, fuel efficient Cummins Tier III horsepower and gutsy digging force, the mid-size Hyundai crawler excavator – one of the extensive range distributed throughout Australia by Porter Equipment – is one of several such machines to wear the DECC livery. "The telescopic boom on the front is a pretty unique bit of kit though," Lombardi explains. "Because there are regulations in cities like Sydney which don't allow us to load out spoil from the site into trucks waiting outside in the surrounding streets, we have to perform all of these operations inside the perimeter fence. "This brings with it complications of course, because when you're working a confined, multi-level site like this, you can't always have the digger and the tip truck sitting side-by-side, or even on an adjacent level. "But this telescopic boom gives the digger extra abilities underneath it in the same way a high-reach excavator is designed to maximise efficiency above it. It's pretty clever." The telescopic nature of the boom allows Lombardi's excavator operator to 'reach down' and precisely load out into trucks that sit below the machine. The excavator is positioned on a toughened suspended steel structure above the site access point, meaning the truck can drive directly onto the loading platform, receive the material from above and be gone again without unnecessary manoeuvring inside the work cordon and traffic management headaches outside of it. In this instance the telescopic boom (which is made by Hyundai) is paired with a toughened clamshell bucket.



Extra cameras, a vertical sensor unit and even a bottom window within the cab can be added to improve operator visibility.

The boom can reach down to a maximum of 30 metres and, thanks to the machine's powerful hydraulics, it can telescope at speed regardless of the load weight in the bucket. Hyundai can even specify in additional components on the excavator the telescopic boom is attached to, such as an extra camera, a vertical sensor unit and even a bottom window within the cab, allowing the driver to see down between the crawler tracks. Depending on the requirements of the next job the Hyundai R320LC-9TS is required on, the telescopic arrangement can be exchanged for a conventional boom and attachment. "We've demolished an old hotel here on this site and prepped it for a new structure to be built," says Lombardi. "The client wants to marry-in the existing basement levels with what's being constructed above, so we need to get those spaces ready. We have

to be very systematic with every project: you need to be thinking 20 steps ahead all the time. "If we can position a big piece of kit like the 33-tonner in one central spot and have it work efficiently there, it makes other parts of the process equally efficient." And with the DECC team in constant demand across three states, project efficiency is a big deal. There is nothing conventional about demolition work: take a moment to ponder the engineering nous required to pull off a successful implosion or induced collapse, let alone a 'standard' deconstruction job like the one on these pages. But sometimes a conventional machine, like the Hyundai R320LC-9TS, paired with an unconventional component such as the Hyundai telescopic arm, can be proof positive of thinking outside the box. Or perhaps, as is the case here, inside it.



The telescopic boom's 25m reach is invaluable on a multi-tier site like this demolition project.

STRENGTH TO STRENGTH

TEREX ARTICULATED HAULER

Civil and demolition specialist DECC have recently added new Terex and Hyundai construction equipment from Porter Equipment to its fleet. The new Terex Gen-10 dump truck is proving to be fully equipped to take on the demands of the most extreme operations.





A brand new Terex TA400 dump truck is hard at work at DECC's Remondis site at Swanbank, just outside of Brisbane, these days. DECC's national plant manager Josh Cutts and his team are happy with this latest addition to the fleet. They are impressed with the performance, particularly in some of the very tough conditions where DECC operates.

DECC specialises in demolition, environmental, civil contracting, earthworks, remediation and decontamination services as well as project management and consulting services within the construction industry. With offices in Queensland, New South Wales and Australian Capital Territory, DECC operates in metropolitan areas as well as regional areas from Brisbane right down to Canberra. It has a fleet of over 100 machines, including excavators, skid steer loaders, articulated dump trucks and road trucks.

"We have pretty rough conditions in demolition and so we go for gear that is tough, reliable and efficient but without that hefty price tag," Cutts says. "We do a lot of landfill jobs from design, construction, monitoring, remediation and post-closure management and the TA400 dump truck is doing a lot of these landfill jobs for us – from remediation of landfills to stormwater management. The Terex TA400 articulated dump truck has been giving us heavy-duty and efficient performance in various conditions that it has been used so far." The TA400 is part of the Terex Gen-10 dump truck series that is known for its robustness and superior performance in large-scale construction projects, quarries and mine sites. Capable of moving high levels of materials quickly and efficiently, the off-highway Terex articulated dump truck is a cost-effective choice for all working applications. It offers a maximum payload of 38 tonnes and heaped capacity of 23.3 cubic metres. Its six-cylinder, in-line, direct injection diesel Scania DC13 engine packs 331kW power.

The fully automatic Allison HD4560 transmission with planetary gearing offers electronic control with six forward and one reverse gear, and integral retarder mounted directly to the

engine. Three heavy duty axles, with full floating axle shafts and outboard planetary reduction gearing, in permanent all-wheel drive (6x6) have differential coupling between each axle to prevent driveline wind-up. Each axle has automatic limited slip differentials, while the leading rear axle incorporates a through drive differential to transmit drive to the rearmost axle. This differential and the dropbox output differential are locked simultaneously using one switch selected by the operator.

Other features include improved operator comfort, hydrostatic power steering, calibrated with the correct balance of power and gearing for effective productive drive to the wheels on all working applications, lean burning engine, and European Stage 4 emissions standard achieved with no diesel particulate filter (DPF). "We had a requirement for an additional dump truck so we got a Terex TA400 for trial. We used it for a couple of weeks before buying one. Apart from the landfill jobs where it is being used currently, we plan to use this machine across various other sites and jobs in the future," he said. It is one of a number of machines that DECC has recently taken delivery of from Porter Equipment.





"Although we have excavators from a few different brands, we tend to favour Hyundai for their quality, performance and also value for money. "Our first excavator was a Hyundai and to date it is our first choice for larger gear," Cutts says. "In the past five years we have purchased a number of Hyundai models including, R125LCR-9A, R145CR-9, R210LC-9, R235LCR-9, R320LC-9, R380LC-9, R430LC-9, R480LC-9 and R520LC-9. A few of these were bought in the first half of this year alone, including the Hyundai R145CR-9, R210LC-9, R235LCR-9 and the R320LC-9 with a telescopic arm. The R320LC-9 was purchased for an ongoing project in Surrey Hills and hopefully we can use that machine for a bit more work in the future now that we own it," he says.

All these excavators are a part of Hyundai's Robex 9 series of crawler excavators, ranging from 11 to 120 tonnes. The series includes superior quality machines built us

ing latest ergonomic research to provide improved operator comfort, and feature advanced technology hydraulic management system that offers better performance and precision. "Apart from their performance, I like Hyundai for their after-sales service. Porter Equipment is DECC's trusted supplier of Hyundai equipment and machinery. Managing all the plants for DECC, from purchasing and maintenance to selling, Cutts deals with the team at Porter regularly and has been extremely happy with the service offered by them. "I can't fault their service at all. I buy a lot through them – tyres, electrical gear, and parts and other components for other brands.

"They're brilliant – from their sales team to the guys in the yard, who drop everything to come and assist us if we ever have a breakdown. I've worked with them in Brisbane, Sydney and Newcastle and their teams have been extremely supportive all the time."



**WE HAVE PRETTY ROUGH CONDITIONS
IN DEMOLITION AND SO WE GO FOR
GEAR THAT IS TOUGH, RELIABLE AND
EFFICIENT.**

YEARS OF EXPERIENCE

COVER STORY



NEW LOCATION Like the other GMS sites, the first thing that strikes you about the Papakura yard (aside from its 15,000m² size) is just how orderly everything seems. The company has always appeared to take the 'a place for everything and everything in its place' approach to yard organisation. And things are certainly no different here, with long neat avenues of (predominantly) car bodies demarcating traffic flow and ferrous and non-ferrous material processing areas, all on acres of solid concrete. GMS' Auckland trading manager and site supervisor, Jonathon Te Whare, says that the new location finally gives the company a foothold in the busy Auckland market; it's the bricks-and-mortar realisation of a long process, which Jonathon has been involved with right from the start. "It took us awhile to find the right commercial yard, but now that we've established ourselves here, there's plenty of activity," he says. "When you establish a new yard, you have to ensure you've got enough of a stockpile to feed the machinery, so we've spent the last few months working towards amassing a 5000-tonne stockpile. The last thing you want to do is start processing and then, 300 tonnes in, have to slow everything down again; it's just not an efficient way to work."

NEW MACHINERY To help ensure that efficiency into the future, GMS has, once again, invested in machinery for the new yard that's supplied by Porter Equipment. These heavy-duty machines include another 25.7-tonne Hyundai R210W-9 MH—the model of materials handler that has certainly now taken on the 'worker ant' role at all of GMS' sites these days. Additionally, a new Hyundai HL730-9 wheel loader (the entry-point to Hyundai's 15-model strong wheel loader line-up) is tasked with moving bulk material around the yard, while inside the processing warehouse, an ASV RS-

75 compact track loader has proven itself a nimble tool, its pocket knife-like abilities fulfilling a variety of roles. Hyundai manufactures a variety of applications excavators for the metal recycling and demolition industries. With their rising and tilting cabs and wheeled undercarriages, the 'dash 9' materials handlers are the stars of the show in this environment, however. "They're good machines, easy to operate, and very reliable too," continues Jonathon. "We invest in new machinery because there's just too much of a risk to the operation if you're relying on older gear. One breakdown could bring your whole operation to a standstill and we can't afford for that to happen, so if the guys are using new machines, then there's much less chance of an issue. "It also helps to have a distributor like Porter Equipment behind the machines. It's the Porter people that make the difference. They're great to deal with, and we've been using their gear for long enough now that they know what we expect of anything we're purchasing to put into our operation. They know how we operate and what will work on our sites. I'd say whenever it comes to extending our fleet, they'd be the first people we call." Jonathon also says having staff who look after the machinery is key to maintaining a reliable fleet. "We pride ourselves on operating tidy sites and that extends to our machinery. We want it to be in good condition and our guys all understand that. It helps everybody out." "Nine years ago, we started out with a couple of utes and no customers. Now, GMS is the second-biggest operator in the country," he says. "We've always been ambitious, but we've never wanted to rush things. We're a close-knit team despite now being spread across three locations. We all know each other well, and we look to get the right people working for us. That includes our suppliers as well, and we know that Porters will look after us and our machines so we can continue to get the job done."

Writing about machinery and those who own and operate it brings with it plenty of satisfaction for a variety of reasons. One of the top ones, however, is certainly the privilege of tracking a company that does what it does exceptionally well through equally exceptional growth over the course of many years. This report counts as my third visit to Kiwi-owned Global Metal Solutions' (GMS) operations but only my first to this particular location. When I initially met GMS owner/director Craig Tuhoro in 2014, his Hamilton materials recycling yard had only been open a couple of years. Taking plenty of experience in the industry into account, he had branched out on his own. The machine I was there to check-out back then—a Porter Equipment supplied Hyundai R210W-9 MH applications excavator (materials handler)—was the first machine wearing the Korean manufacturer's nameplate that Craig had invested in.

Fast-forward three years and several other Hyundai machines had joined the GMS fleet, including another two Hyundai R210W-9 MHs as well as a Hyundai R180LC-9 excavator, each fulfilling different roles at the busy Hamilton yard and utilising a variety of different attachments, such as rotating grabs, grapples, and magnets for separating out materials. That was back in 2017. Now, here in 2020 (we're averaging a story on GMS every three years at this point, so we'll be sure to update you again in 2023), the company has expanded even further. Craig and his team have opened up another branch of GMS in New Plymouth in the intervening years, while a third site—in South Auckland—opened its gates in November last year.



Global Metal Solutions has gone from strength to strength over the last decade. And with an expanding fleet of Hyundai equipment tackling a multitude of tasks across three busy materials recycling yards around the North Island, heavy-duty machinery distributor Porter Equipment has been with the Hamilton-headquartered company every step of the way.



PORTER SOCIAL

CHECK OUT OUR RECENT VIDEOS



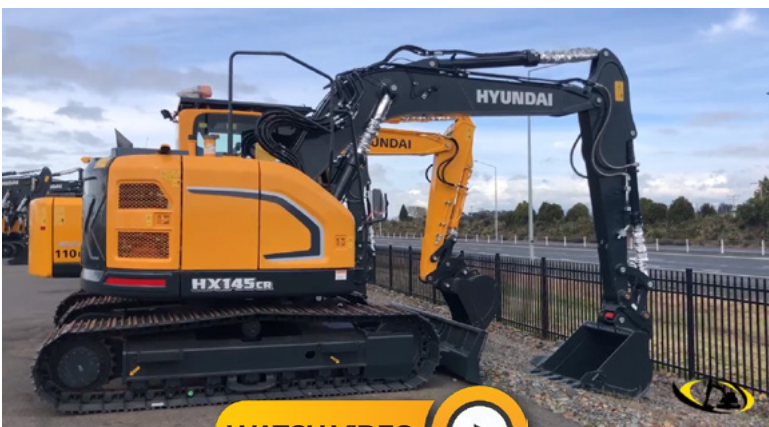
CRUSHING SERIES BY SANDVIK

The QH series are the most robust mobile cone crushers, perfect for all quarrying and mining applications. Available across New Zealand and Australia the Sandvik mobile crusher range is backed by our 24/7 backup support and various factory warranties.



ALL NEW HYUNDAI HX300L

Shelley @ Porter Equipment is back with another new model in the HX range by Hyundai. The HX300. Take a look at this 30 tonne excavator built tough and reliable and featuring the latest HX technology for optimum performance in the toughest conditions.



HYUNDAI HX FINANCE PACKAGE

Contracting season is coming!! Be prepared and take advantage of these crazy low interest rates 1.99% / 36mths - 10% deposit. Limited time only. Hyundai HX Range HX145CR, HX220L HX235LCR, HX300L HX350L. Ts & Cs apply.



WATCH VIDEO



HAMILTON BOYS HIGH AND PORTER GROUP

The Porter Group, proudly supporting Hamilton Boys' High School 1st XV Rugby. Two Waikato based icons, leaders in their respective fields! Both have a proud history, an outstanding reputation and a drive to achieve excellence.



WATCH VIDEO



HYUNDAI FX SERIES

This time we've gone bush... Shelley @ Porter Equipment is back with our purpose built, factory built log loader. The FX3230G is a part of the all-new versatile FX range – with the option of 26, 30 or 32 ton... these bad boys are built for the toughest forestry conditions.



WATCH VIDEO



USED FORESTRY EQUIPMENT

Check out Porter Equipment's large variety of pre-owned forestry machinery to suit all applications and budgets. Porter Finance has a range of different finance options available making your purchase a breeze! Porter Mechanical and Porter Parts can support and service your machine from any one of our 25 service branches nationwide.





PORTERHIRE



NEED **HIRE** EQUIPMENT?

Porter Hire has on offer a complete range of heavy equipment for hire. Rental machinery is available to cover smaller machine requirements right through to all heavy construction industries; roading, forestry, industrial and agricultural, recycle and landfill, construction, and quarrying and mining.

0800 650 600



HIRE@
PORTERCE.COM



PORTER ACCESS

Porter Access is a natural evolution from Porter Hire, and are committed to supplying customers with the best construction access equipment available. Porter Access specialise in access equipment hire, having a strong alliance with key supplier Haulotte Group, and this ensures Porter Access has world class equipment available.

PORTER CRANES

Porter Cranes specialise in general and taxi crane hire, long and short term crane hire and, commercial and industrial crane hire. Fully trained operators and riggers have the expert knowledge to lift, position and suspend items including, but not restricted to, concrete panels, structural steel, roofing iron, factory and manufacturing plant.

MARLBOROUGH VINEYARDS

Marlborough's Ron McLean Contracting has a job clearing a property of 7m poles and tree stumps, in preparation for planting grapes. Ron operates a smaller 3t excavator for the majority of his work, but relies on Porter Hire for larger jobs his machine can't handle. In this instance, the rootrake attachment on Porter Hires Hyundai R145-9, is a highly valuable tool in making sure as little soil as possible is passed to the slash pile. Once it dries out, the slash will burn much cleaner satisfying local council requirements, and hopefully not upsetting the neighbours!

Once the land is cleared, companies such as Renner Contracting provide post-driving services, also using Porter Hire rental equipment. With a vibrating head on a R145-9, Mikes team can drive over two thousand posts daily and cover ground much quicker than conventional agricultural equipment.

Ron and Mikes operations are typical of the work carried out by contractors in the Marlborough area. The region has over 500 grape growers and approximately 150 wine companies, and of the approximate 400,000 tonnes of grapes harvested annually, 77% originates from Marlborough. As the demand for Marlborough Sauvignon Blanc continues to grow, so does the need to develop what was previously pastoral land, into vineyards. Recent studies have identified another 5000 hectares of land may still be available for future developments. This would typically involve the removal of existing shelter belts and fruit crops, along with land contouring, post driving, irrigation, roading, water storage dams, and wind machine installation in the areas more prone to frost.

Along with ongoing maintenance programmes, it's safe to say there's enough work to keep Ron and Mike busy for a few years yet.



JACKS POINT WILLOW POND PROJECT



Making way for a new subdivision down in Jacks Point Queenstown - Willow Pond. This work is being carried out by United Earthworks and Innovate Civil and Construction. Porter Hire currently have one Volvo 30T Dump Truck and two Hyundai Excavators, an R210LC-9 and R430LC-9, with grab buckets used for clearing trees and making way for a new subdivision in Queenstown.



POND G PROJECT

A pack of Porter Hire Terex TA300 dump trucks seen working on the Pond G project - a storm water and treatment wetland for future subdivisions in the Papamoa area. Bruce Watson from Map Projects said they moved 250,000 cubic metres of sand and top soil in the project - impressive! Alongside the Dump Trucks, Porter Hire had a CAT D6 Bulldozer, Hyundai R430 Excavator and a 30 ton ADT Watercart assisting with the Pond G project.



TURITEA WINDFARM BUILD

Adding to the R235-9 and 4x4 crew cab truck they already have, the plant will be used by downer in their back fill crew, In one of the photos you can see a concrete base ready to be refilled , the top of hole would be around 30mtrs wide going around 20mtrs deep in a cone shape.



FOXTEN BRIDGE DEMO

T C Jurgens & Sons have hired a Porter Hire Sandvik QJ240 and Hyundai R210-9 to help bring down and demolish the Whirokino Trestle Bridge on SH1, just south of Foxton. The trestle bridge was built over the Manawatu River between Foxton and Levin during the great depression of the 1930s and has now be replaced.





MAKE IT TIGHT

JUST ANOTHER DAY IN THE OFFICE FOR PORTER HAULAGES' DRIVER JAKE TAYLOR. SEEN SQUEEZING A PORTER HIRE 52 TONNE R520LC-9 EXCAVATOR THROUGH KAIKOURA'S TUNNEL WITH JUST MILLIMETRES TO SPARE!



On route to deliver a Hyundai 120T R1200-9 for Porter Equipment to a gold mine just out of Hokitika. Jake Taylor, Kevin Hayes, Ben Hansen and Josh Pyle are about to drop down on the SH73 viaduct in Oti-ra gorge with 4 of the 6 loads in total spanning over two days for the Haulage team.

No truck, machine or person were hurt in the making of these photos, maybe just a few frayed nerves. Porter Haulage squeezing a Hyundai R480LC-9 under the Conway underpass on SH1 in Canterbury.



Jake Taylor putting Porter Haulage's T609 thru its paces in Porters Pass transporting a Porter Hire Hyundai R235LCR-9 from Greymouth to Christchurch. Just another day on the road for Jake.



KEEP IT MOVING

Porter Parts provides parts that are new, remanufactured or used, for global construction brands including Hyundai, Airman, BOMAG, Sandvik, Log Max, Madill, Edge, NC, Furukawa, Agrimac, Komatsu, Caterpillar, Hitachi, and Kobelco. With contacts worldwide, Porter Parts has the ability to source many rare parts. Porter Parts is the leading construction parts stockist in New Zealand, with branches nationwide providing same-day dispatch, overnight service anywhere in New Zealand, and Hyundai spare part availability of 92.5%.

Porter Parts is the leading supplier of track gear to the New Zealand market, with 10 track press facilities located nationwide to meet demand for undercarriage maintenance and replacement. These track press facilities carry out undercarriage requirements for most brands of tracked equipment.

In Australia, Porter Parts offer a wide selection of leading brand parts across the construction, forestry, quarrying and mining industries. With branches across every state supplying quality parts backed by a premium replacement guarantee, customer satisfaction and peace of mind are paramount.

NZ - 0800 650 600
AUS - 13 42 32

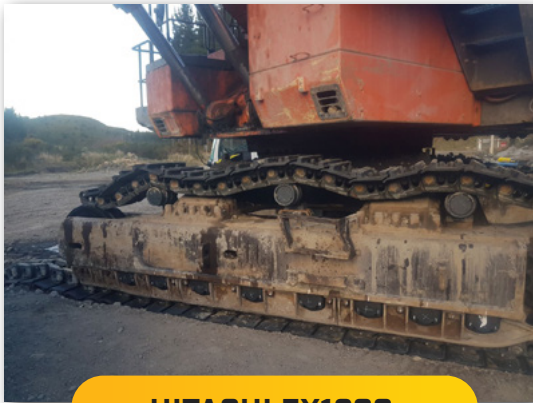


PARTS@
PORTERCE.COM



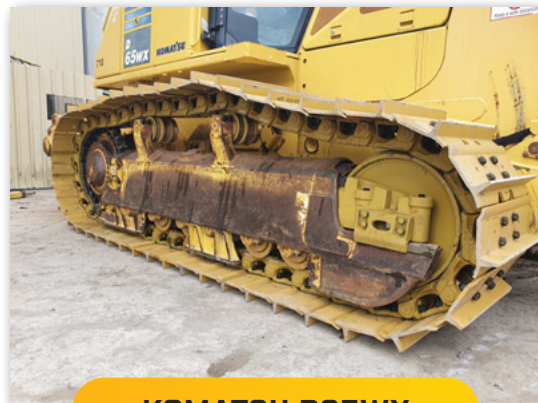
NO JOB TOO **BIG** OR TOO SMALL

Our Christchurch Parts Division is well equipped to take on any undercarriage requirements you may have. Not only can we offer you quality replacement parts at competitive pricing, for a large range of makes and models but we can also carry out the changeover in house, with a dedicated track press or out in the field with a fully equipped service truck complete with a portable track press. Here's some recent work carried out by our Christchurch parts team and track press division.



HITACHI EX1200

Undercarriage rebuild, track groups were assembled in our Christchurch track shop and trucked to site, everything else was repaired and replace on site in the coal mine.



KOMATSU D65WX

Undercarriage rebuild including line boring and repairing Equalizer Bar, replacing pivot shaft seals and bearings and welding in new idler guides + wear strips.



VOLVO EC480D

Undercarriage rebuild included removing track frames so we could drill out over 50 broken roller and track guard bolts then drilling all the other roller bolts out to a larger size to avoid this issue in the future.



KOMATSU PC600

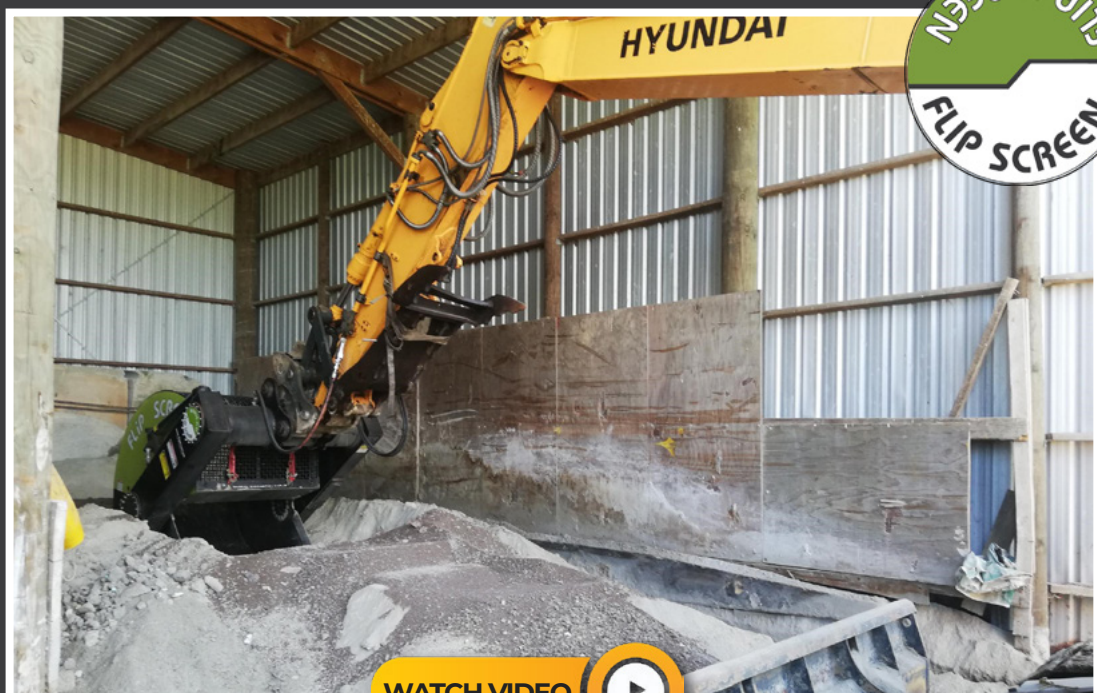
Undercarriage rebuild including re pin and bushing the minor and major roller bogies, this job was done over lockdown as this machine was deemed essential service being one of the front line machines at Canterbury's largest landfills.

flip screening
portable.
productive.
profitable.

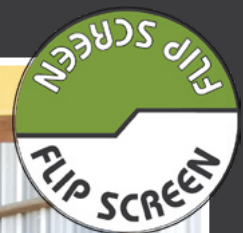
Early in 2019 Porter Parts became the NZ distributor of the award winning Flip Screen. A screening attachment that will fit on your Excavator, Loader or Skid Steer that is limitless in terms of material. From screening green waste, manure, sorting rubbish, concrete from dirt, cleaning rifle ranges, garden supplies, composting, screening road bases, blending soils, scrap metal, quarry operations, mining, sorting building rubble, pipeline bedding, rock washing, plastics from glass, firewood and the list of uses goes on and on.

If you can scoop it, Flip Screen will screen it.

When Craig Lennane from Porter Mechanical in Tauranga was asked about a screening attachment from Eddie at Lyndhurst Farm in Te Aroha, he teamed up with Mike Steedman (Steady) in Porter Parts Tauranga/Rotorua to come up with the appropriate attachment for his R180-9 Hyundai. The solution was the E80 Flip Screen with a 25mm Mesh (which is changeable from 6mm to 300mm in 5 minutes) which was suitable for the multitude of farming products that Eddie wanted to screen. In the first week Eddie has screened over 80 tonne of products and couldn't be happier commenting that "This thing is going to pay for itself in no time".



WATCH VIDEO



MANUKAU MAKEOVERS

Stephen from Stephen Boler Earthmoving recently engaged with the team at Porter Parts Manukau when looking to freshen up a couple of his fleet. Our parts team offered just the solution and fitted them out with new undercarriage, hydraulic cylinder real seals, a full service and new coat of paint in order for the machines to head back out into service looking pristine. All parts supplied and worked carried out in house from the team at Manukau.

Pictured below are Stephen's Hitachi ZX120 & Sumitomo SH120.



Clennett Hire taking delivery of their brand new **Ammann ARX40-2** 4 ton Double Drum Roller. Great to see the new Ammann -2 range continuing to perform in this demanding hire fleet.
Keil Davies (0448 155 145) - Western Victoria



J Dorne Contracting Limited are putting to work their brand new purpose built **Hyundai FX3230LL** forestry machine. This Hyundai joins Josh's fleet as a shovel machine and has been plumbed for a Satco Feller Buncher head. Josh Dorne is extremely impressed with its overall performance and power. **Joshua Hunter (027481652) - Manawatu & Wellington**

New **Madill 124 Swing Yarder** for **Rosewarne Contractors** of Whangarei. Lars and Fiona Rosewarne have added another new Madill Swing Yarder to their fleet. Seen here at Glenbervie Forest, Whangarei, getting ready to do the business. This joins a growing group of Madill machines in Northland and NZ. **Paul Gorrie (0276864627) - North Auckland & Northland**



Hobbs and Banks take delivery of their new **Hyundai HX220L**. Pete Hobbs is a very loyal customer of the Porter Group, purchasing over a dozen Hyundai Loaders, 3 Hyundai Excavators and Sandvik equipment. We would like to thank him for his valued business and wish him all the very best for the future. **Chris Toase (0272742914) - Canterbury & West Coast**

Stockman General Contractors have taken delivery of another new **Hyundai HL757-9** Loader, equipped with a 2.8m heaped bucket to speed things along on their present projects around Auckland. **Doug Ball (+64274368297) - Auckland**



Olsson Sand and Gravel Supplies take delivery of their new **Hyundai HL740-9** Loader. Machine handover completed with a very happy customer! Huge thanks to Michael Guy and the workshop team for all the hard work and efforts with a very busy end of June.
Marc St Ange (+61 419713482) - Melbourne



To complete road preparation and finishing **Crossroads Construction Limited** have invested in the 8t **Bomag Double Drum Roller**. Machine delivered this week and the operators are very impressed with the spec of the machine and loves the crab walk option.
Steve Puddle (0274943486) - Bay of Plenty & Coromandel

Pat Cleary Excavations in West Wyalong recently took delivery of his latest **Hyundai R55-9** excavator. With Pat being contracted to various Major Projects as well as Lake Cowal Gold Mine he needed a machine that delivers performance, safety and reliability. That made it a simple choice, another Hyundai! In fact he was so keen to get on his new machine he had it hard at work before the sales rep was on site!
Mark Salmon (+61 408362603) - South NSW & Canberra



Jason from **Action Bobcats** welcomes their latest machine; a new **Bomag BW120AD-5**. He and his business partner Glen appreciate the Bomag technical advantages, such as Economizer, which gives accurate compaction every time. Porter Group's sales and support package made the decision to invest in the Bomag product an easy call.
Dave McSorley (+64272157745) - Waikato/King Country & Taranaki

Centralines has recently taken delivery of a new **Hyundai R35Z-9** mini excavator. The machine was supplied with a range of extras including an NSP tilt bucket and Attach2 grab bucket. Rob can't wait to get the benefit of the heater in winter, the air conditioning in the summer and to have an environment to keep him out of the elements.
Roger Pedersen (+64272460302) - Hawkes Bay/Gisborne/ Taupo

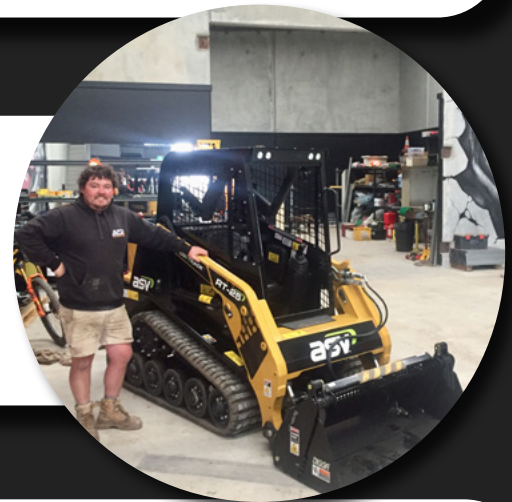


A successful handover and operator familiarisation in Swan Hill today for **MCG Civil's** new **Hyundai R235LC-9**. We wish MCG Civil all the best with their new addition and look forward to supporting the growth of their business into the future!
Keil Davies (0448 155 145) - Western Victoria



The very first **Hyundai HX220L** Excavator to dig up Victorian soil! Delivered to **Ashley & Nancy** in Central Victoria. This build included Proportionally Controlled Attach2 Heli Tilt Tilting coupler, Tinted Windows, UHF radio, Turbo Timer. Best series produced by Hyundai Construction Equipment to date!
Justin Cooper (+61 439101257) - Melbourne

Adam from **Groundbreaking Plant Hire** taking delivery of their brand new **ASV RT 25** Canopy Track Loader. An addition to their growing machinery rental business. Thanks to Adam and the Groundbreaking Plant Hire management team for their valued business.
Marc St Ange (+61 419713482) - Melbourne



Another machine recently commissioned for **Kaitoa Logging!** This fully spec'd **Hyundai R430LC-9** forestry machine together with a Satco 3L2T processing head is ready to work alongside their Hyundai FX3230LL. Matched with a Porter Mechanical "Fixed Price Servicing Plan" means Ben has a total understanding of his running and ownership costs from the get go. **Steve Puddle (0274943486) - Bay of Plenty & Coromandel**

One of the great successes of Porter Group is when clients come back time and time again. After "Kiwi" at **Braidwood Excavations** had such great performances from his Hyundai 21T Dash 7 and Dash 9 it made sense to continue a great partnership. Kiwi recently took delivery of his new **Hyundai HX220L** Excavator.
Mark Salmon (+61 408362603) - South NSW & Canberra



A **Bomag BC772RB-2** compactor delivered yesterday to Southern Landfill in Wellington for **Leach & Co** to replace an aging machine which has now retired. The operators are impressed with the operator comfort, drive, & compaction performance of these machines. The management team are pleased with high productivity & saving of air space that these compactors can achieve. **Steve Puddle (0274943486) - Bay of Plenty & Coromandel**



After a great run out of the previous machine a new replacement has been manufactured for **Scrapman BOP**. This new **R250 -9** "High and Wide" machine has a 500mm cab riser which provides excellent viewing height for the operator to work in a scrap metal operation without the need for a "Hydraulic Elevating Cab" machine. Thankyou Mark & the team for or your business. **Steve Puddle (0274943486) - Bay of Plenty & Coromandel**

Elford Group's new **Sandvik QE441** scalping screen is currently producing 450 tons per hour. Elford Group trialled multiple brands before settling on the Sandvik for the additional capacity produced & build quality. With the ability to position the side conveyors on either side of the machine, this scalper is not only highly productive but highly flexible on those sites with limited space. **Lee Heys (+61 401666603) - Sydney**



The whole process from initial enquiry through to delivery of their new **Hyundai HL740-9** was an absolute pleasure. Thanks to the great people at **Warrnambool Rapid Mix** for not only their commitment to the Hyundai brand, but putting their trust in Porter Equipment and Keil Davies to deliver a front line solution. Thanks again WRM. **Keil Davies (0448 155 145) - Western Victoria**

Kea Logging were in need of a machine that could do shoveling, tracking and also lift 5 axle log trailers safely. The **Hyundai FX3230** handles all these jobs with ease, this is the 3rd new Hyundai machine **Gav and Clayton** have purchased from the Porter Group this year. Thank you, Kea Logging for your continued loyal business and all the very best going forward. **Chris Toase (0272742914) - Canterbury & West Coast**



A new dawn is upon us... First 2x **Hyundai HX350L** excavators delivered into Australia to this **Sydney Sandstone Quarry**. This return customer was influenced by... Superior hydraulic performance. Superior comfort. Superior operation. Superior support. Superior running costs. Superior safety (AAVM). The crusade of the HX350L has begun!
Lee Heys (+61 401666603) - Sydney



This new **Hyundai HL780-9** is taking in the view before it starts work at the **Esperance Port** in Western Australia. Lots of hard work has gone into getting this machine ready to work in this harsh environment.
Matt Milner (+61 448159479) - Perth

Graeme Saville is the proud owner of a brand new **FX3230LL**. Graeme is using his machine as a multi-use platform, utilising a processing head and grapple. It has proved to be a very good decision, with production increasing markedly. Graeme appreciates the lifting and shovelling capabilities of the LL model together with its climbing abilities.
Dave McSorley (+64272157745) - Waikato/King Country & Taranaki



The latest addition to the **Total Civil** fleet is a brand new **Hyundai HX300L** on 800mm shoes. Ready to start work on a major building project in South Auckland, the new HX300L will be feeding Dump Trucks as part of the site excavation. Owner Stephen Thom was impressed with the cabin upgrades and smooth operation, the expected fuel savings will also be a huge benefit. **Paul Gorrie (0276864627) - North Auckland & Northland**

David Williams, the owner of **Buildform Ltd** from Auckland City has recently taken delivery of this new **Hyundai R55-9**. Poised to start work on one of his new housing development sites in the City.
Doug Ball (64274368297) - Auckland



Stephen & Tracey Thom of **Total Civil** has taken delivery of their first new **Hyundai HX235LCR**. Working in the Wynyard Central area on Beaumont Street. This continues the work Total Civil have been doing in the Wynyard Quarter area and America's Cup venues. The new HX235LCR will be joined by another new HX and joins a large Hyundai fleet that Total Civil already have. **Paul Gorrie (0276864627) - North Auckland & Northland**



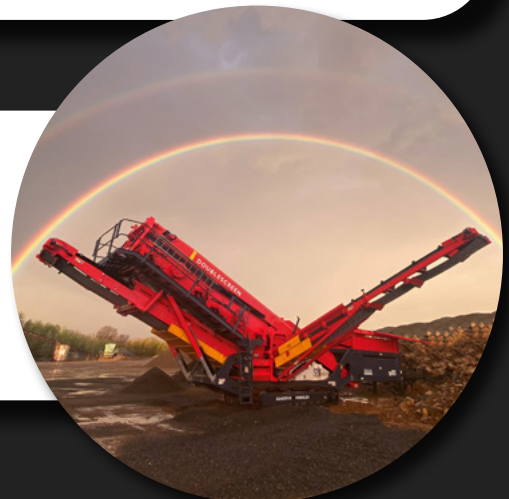
Dynamic Metal Re-Cycling takes delivery of their new "Dynamic 1" **Hyundai R145LCR-9**. Being awarded a bushfire clean-up contract. Tim began looking at various excavator brands and companies that can support his business. "I couldn't be happier with the service I've received by Mark and the Porters team. I can't wait to put it to work and call Mark in 6 months to buy Dynamic 2." **Mark Salmon (+61 408362603) - South NSW & Canberra**

The King of it's class! This waste spec **Hyundai HL770-9** wheel loader recently delivered to a very loyal Sydney customer joining another HL770-9 delivered only 8 weeks ago. The HL770-9 is the most value for money wheel loader in its weight class today... price, fuel burn, service & maintenance costs, future guaranteed value and performance, it is simply incomparable! **Lee Heys (+61 401666603) - Sydney**



At Porter Group we have a number of clients who keep coming back time and time again! Brendon from **Martin's Fertilizers** have just added their 7th loader to the fleet! "We find the performance and value for money of the Hyundai Loaders as well as the service we receive from Porter's to be the reason we come back to Hyundai as the brand we work with". **Mark Salmon (+61 408362603) - South NSW & Canberra**

Canberra Sand & Gravels latest **Sandvik QA451** is set up and producing already! The industries leading combination are Porter Group and Sandvik, Porter Group with our National Branch Network, Trained Techs, Product Specialists, Spare Parts Holdings and Sandvik with a wide range of mobile crushing, screening and scalping solutions for quarrying, recycling, contracting and mining applications. **Mark Salmon (+61 408362603) - South NSW & Canberra**



 **HYUNDAI**
CONSTRUCTION EQUIPMENT

THE ALL NEW **FX SERIES**

FX3026G
FX3026LL
FX3230G
FX3230LL
FX3632G
FX3632LL

0800 650 600
portergroup.co.nz

13 42 32

portergroup.com.au



PORTER EQUIPMENT