

PORTER PRESS



TEREX DUMP TRUCKS

NOW AVAILABLE FOR
HIRE IN AUSTRALIA



P:17

MADILL HT 2250C
PROVING ITS WORTH



P:14

SAND & SCIENCE



P:21

AH LIKI CONSTRUCTION
LTD SAMOA



P:27

PORTER HAULAGE
LANDING AN ODD JOB

PORTER SOCIAL



Porter Group CE
August 12 · 🌐

Some images from the Super 8 final on Saturday. Hamilton Boys' High were crowned the Champions after they won 13-5 against Hastings' Boys High School in a hard-fought game. Porter Group are proud supporters of The Hamilton Boys' High School First XV Rugby.



👍👍👍 55

9 Shares

Hudson Timoko loves heavy equipment and machines.

Earlier in the month, when he turned two, his dad and our staff member, Nathan Timoko, took him sightseeing at Porter-Group HQ. Hudson was all smiles as seen in this picture. Thanks to Nathan for sharing this picture.



👍👍👍 111

1 Comment 9 Shares

Thanks to the guys at Mukka Motorsport for coming down to Porter Group HQ today. The staff had a wonderful time admiring the stock cars and chatting with the race drivers and team. Catch them at the opening meeting at Kihikihi at 5:00pm tomorrow night. Hope you all have a wonderful long weekend.



👍👍👍 154

3 Shares

Material Handler machine. The specialised Material Handler is fitted with a Hyundai Orange Style Grapple for scrap metal work. Stuart Kagan and the team are extremely busy and the new R210W-9MH was up and working minutes after delivery. This joins another R210W-9MH on-site and will be working sorting and loading containers for export.

North Auckland & Northland Territory Manager: Paul Gorrie (0276 864 627)



👍👍👍 56

1 Share

November 4 · 🌐
Neil Moratti of Moratti Earthmovers Ltd takes delivery of his new R55-9 from Taranaki Territory Manager Dave McSorley.

Neil appreciates the features and value for money that Hyundai offers and has traded his last R55 on this new one.

Dave McSorley (0272 157 745)... See More



👍👍👍 75

3 Shares

Fulton Hogan extracting gravel from the Dart River in Glenorchy in the Rees Valley using a Porter Hire Hyundai R210LC-9.



👍👍👍 38

7 Shares

Two new deliveries for Joe at Roesky Logging Limited. Joe has taken delivery of one of the first factory built FX3230G with ensign grapple. Joe has mentioned it is fantastic value for money and a no brainer to purchase. The price, service and availability can't be beaten. He has also taken the new R380-9 with a 12,000 Log Max, the crew are very happy with the marriage of the 2 machines ... See More



👍👍👍 127

14 Comments 13 Shares

A Wonderful night here at the Porter Group Hamilton with Racing Driver Scott McLaughlin and Sky TV's Stephen Molvor. Thanks to everyone who came. Hope you all have a good weekend.



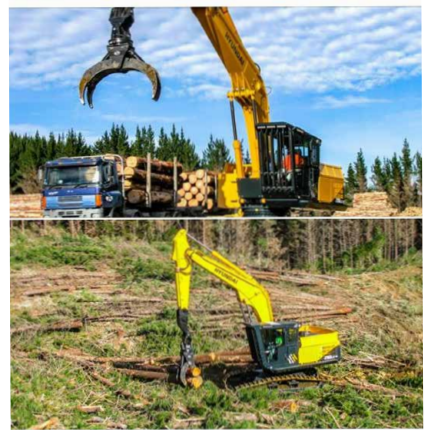
👍👍👍 97

3 Comments 4 Shares

November 13 at 8:00 AM · 🌐

Deane & Sheree James of Down & Out Logging Ltd. have taken delivery of two new Hyundai R290LC-9 High Chassis grapple loaders to support their expanding logging operations & these two new machines replace earlier Hyundai Dash 9 models which had provided sterling service.

The machines have been forestry guarded by PFS Engineering in Hamilton & are fitted with (APC) All Purpose Cabins, with Ensign HT1730 grapples & single bar grousers. The first machine was delivered into Down &... See More



👍👍👍 112

5 Comments 2 Shares

October 27 · 🌐

Collin and Shirley Rosewarne of Rosewarne Logging Ltd have added a new Madill to their Forestry fleet.

The new Madill 3800C Log Loader is fitted with a new Waratah HTH626 Processor, install was by Donaldson Mechanical. The Madill 3800C is seen here at Waipua processing, Colin and the crew were looking forward to the reach and stability of the new Madill when working on the larger wood they encounter.

<https://www.portergroup.co.nz/madill.html>

Paul Gorrie... See More

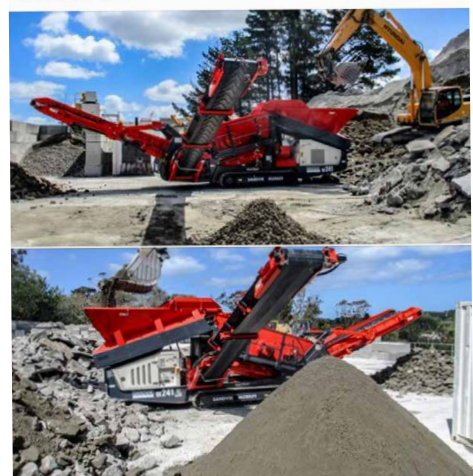


👍👍👍 88

3 Comments 1 Share

November 5 at 8:00 AM · 🌐
Atlas Concrete Ltd, have just taken delivery of a new Sandvik QE241 Scalper Screen.

Seen here at their Concrete Recycling Plant at Silverdale, north of Auckland. The new Sandvik QE241 Scalper will be used to size already crushed recycled concrete onsite. ... See More



👍👍👍 94

8 Comments 6 Shares

IN BRIEF

With a new year comes new opportunity and for those that have felt the cool down in Australia and New Zealand in 2019, those opportunities will be well received. 2020 is upon us and while most in our industry will benefit from the Christmas break, equally we will be eager to take up the challenges of the new year with renewed vigour.

Porter Equipment awaits some new and exciting product releases in the 1st quarter of 2020 and we look forward to presenting the new line up to our many customers across New Zealand and Australia. This is set to be another chapter in the long and distinguished history of Porter Equipment and our close association with our global equipment manufacturers. We encourage our customers to keep a close eye on our website and social media platforms for details of the much anticipated product releases as we plan to run an extensive roll out campaign out across all media formats.

In related news, Porter Equipment has been honoured with the award for Marketing and Brand Excellence by Sandvik Mobiles at the recent dealer conference held in Northern Ireland. This is in recognition of the online digital content initiatives that the Porter Group Marketing team has been heavily focussed on in 2019, and which is central to the Porter Group marketing strategy moving forward. It's likely that you will see a lot more online activity and digital content exposure from the company in 2020 and beyond as our social media platforms evolve and gain traction across our territories.

In terms of new model releases in 2019, we have launched the new FX series of purpose built forestry machines in 3 different classes and 2 configurations of each. Each model is available in the traditional excavator boom & arm configuration, or the straight boom & arm log loader version. The FX series features a new operators cabin and forestry guarding, designed by the OEM to ISO standards to encompass factory structural integrity and quality. The design processes at the OEM level make provision for a lighter weight assembly without any compromise to structural strength, safety or functionality. It simply eliminates the all too common over engineering aspect that prevails in locally retrofitted guarding packages. The initial uptake of these machines has been overwhelming and the momentum into 2020 is a great sign for the product and the industry as a whole.

In Australia, Porter Equipment has released the new Ammann range of compaction equipment throughout its locations nationwide. Having acquired the national distribution rights for the Ammann product earlier in 2019, Porter Equipment

Australia is now well established with the full range of compaction products and has started to gain real momentum with existing and new Amman customers around the country. This range has been a very welcome addition to the line up in Australia and is strategically important for all divisions, not least of which Porter Hire Australia.

Porter Hire Australia has taken delivery of its first intake of Ammann compaction equipment which has been part of a greater expansion program for the division in 2019. Not only has Porter Hire Australia increased the overall fleet size, but has also branched out into new locations, significantly Newcastle and Melbourne. The fleet of Terex Articulated Dump Trucks has grown rapidly over the course of the year and more trucks are on their way to join the line up in 2020.

In 2019 Porter Hire NZ has had a changing market as key infrastructure projects such as the Huntly bypass, Kaikoura and Auckland Southern Corridor are nearing completion. The future project pipeline has also slowed with a number of the already planned replacement projects being delayed due to changing government priorities. As year comes to a close we are seeing work commencing on some of the major new projects particularly in Auckland. There remains good on going work from projects such as the Hamilton section of the Waikato Expressway, Auckland Northern Corridor, the Puhoi to Warkworth Highway and Transmission Gully.

Porter Haulage continued to upgrade their fleet nationwide and earlier in the year introduced their first B Train to support the movement of equipment inter island.

The building sector continues to provide good growth opportunities for Porter Access particularly with some stand out projects being Ormiston Town Centre in Auckland and the Architectural Profiles expansion in Hamilton.

We hope that this edition of the Porter Press provides a further window into developments within the Porter Group and assists you to stay abreast of our continuous evolution. We also trust that as we enter 2020 that the business environment will be favourable and allow our customers and business partner to grow and prosper. We wish everyone the best for the coming year.

Darren Ralph
General Manager Sales & Marketing - Porter Group

PORTER GROUP

4-9

PORTER EQUIPMENT

14-19

PORTER HIRE 12-13, 24-26, 29,30

PORTER HAULAGE

27

PORTER ACCESS

28-29

PORTER CRANES

31

PORTER GROUP USA

10-11

PORTER PARTS

20-23

PORTER PRESS
CONTENTS

STAFF PROFILES



Michael Carter
National Sales Manager
Porter Equipment Australia

Time with the Group?
4 months

Life before joining the group?
I grew up in country NSW with an Agricultural background and have been around machinery most of my life. I've previously been a partner in a successful Kubota dealership as well as a company that importer and distributed Agricultural machinery around Australia

Your Role?
National Sales Manager, working with a talented team of Territory Managers from all around Australia

What do you like about your job?
I love the sales process, from initial enquiry through to making sure our customers are supported.
I'm enjoying working with our Dynamic team of Territory Managers that are all motivated to help customers find the right solutions for their needs and I'm excited by the opportunity that this role offers and I'm looking forward to help grow the Australian component of the business

Time outside the Group?
I'm normally with family and friends; either hanging out on my boat or doing something fun in my home city of Newcastle



Keil Davies
Territory Manager - Western Victoria
Porter Equipment - VIC

Time with the Group?
3.5 years in total

Life before joining the group?
I spent 8 years at Norwood, most recently as National Sales Manager, New Zealand - Kubota Construction Equipment before setting sail for the bright lights of Sydney.

Your Role?
I have recently relocated to Melbourne with the Porter Group to focus on the development of the Metro and Greater Western Victoria regions. I am looking forward to the challenge ahead, meeting new customers and getting around this exciting new territory.

What do you like about your job?
First and foremost, I am most

passionate about the industry and the people in it. The depth and diversity of our product portfolio is a close second. Anyone can carry several brands in their offering, but not many have the calibre of brands, industry experience and resources to support the customer after the sale as we do.

Time outside the Group?
I keep active, enjoy all sports namely Formula 1 and golf and of course an avid All Blacks supporter. I enjoy the occasional beer and currently working my way around Victoria's breathtaking wine country. I live for new experiences, travel often and always up to try anything once. (within reason of course!)

STAFF PROFILES



Craig Tonkin
Parts Manager
Porter Parts - Hamilton

Time with the Group?

2 days and counting

Life before joining the Group?

Most recently I was a BDM for AWF previous known as Allied Work Force in Hamilton, previous roles were Branch Manager for Hirepool, Goldpine Industries. I have also been a Marketing manager and a sales representative. My wife and I have also had our own businesses.

Your role?

Managing the team here at Parts in Hamilton, ensuring that we are all working toward a common goal.

What do you like about your job or your team?

I am still getting to know everyone, but it seems like I have a good team and they are focused in what we do. I am also looking forward to getting out and meeting our customers on their turf & understanding what they need from us.

Time outside the Group?

I am married with one 14-year-old son, Blake & I have been practicing martial arts now for 8 years. My wife Melanie is into horses so that takes up a lot of her time. We also enjoy getting out on our dirt bikes, mountain bikes, jet-skiing or 4wd'ing in my Jeep. When we can, we get away in our motorhome. I have also just this year taken on the role as co-commentator at Huntly Speedway.



Brendan Hackett
Parts Sales Representative
Porter Parts - Sydney

Time with the Group?

2 months

Life before joining the Group?

From the country town of Wagga Wagga NSW, I moved to big smoke in 2010 to add further experience in the machinery industry with Hitachi Construction Machinery and most recently Manitou Australia before joining Porter Equipment.

Your role?

Working alongside our Parts teams servicing new and existing customers in the region.

What do you like about your job or your team?

Covering the large territory of Sydney and surrounds, meeting our valued clients and establishing relationships with the support of a very knowledgeable and experienced team at Porter Equipment.

Time outside the Group?

Cooking, traveling, fishing and watching sports.



27th September was a fantastic night here at the Porter Group Hamilton HQ as well known Racing Driver Scott McLaughlin and Sky TV's Stephen McIlvor came down and spent some time with the staff and Porter Group customers.

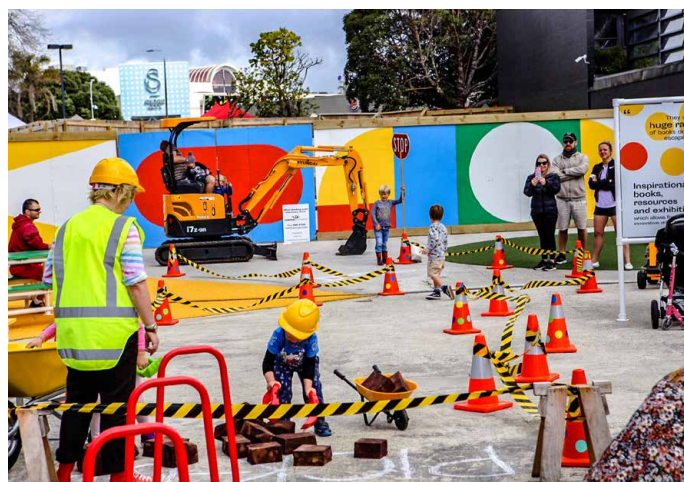
Porter Equipment were at the 2019 Elmore Field Days in Burnswang, Australia in early October. Thanks to everyone who came. It was a great event.



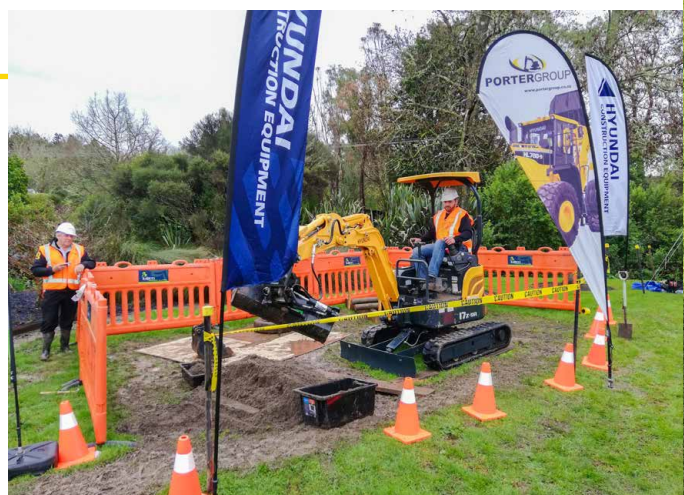
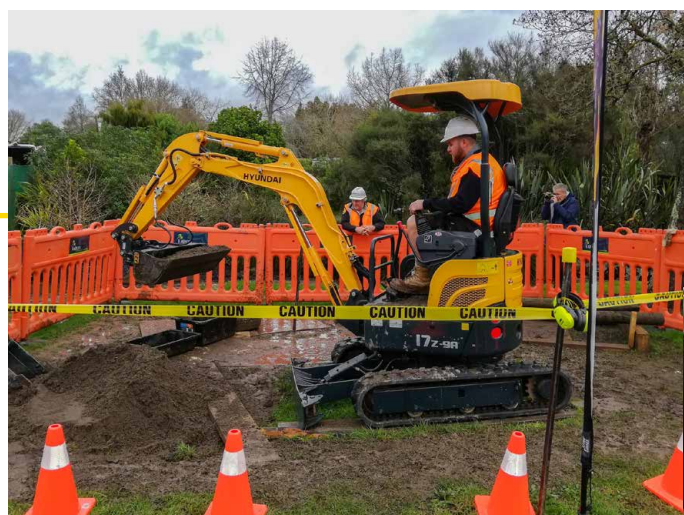
Porter Group proudly supported The Young Landscaper Of The Year Competition 2019 in Drury. Seen here is Hayden Parker from Hayden and Pollard with a top effort.



Pictured here Ben Dyson from Natural Habitats.



The Little Yellow Digger Family Fun event was held in Sep-Oct at Hurstmerewith, Takapuna with a real mini digger on site from Porter Group. Hundreds of kids were seen having lots of fun at the 5 day event.





HBHS SUPER 8 CHAMPIONS

In August The Hamilton Boys' High School 1st XV Rugby were crowned Super 8 Champions for 2019 after a hard-fought 13-5 battle against Hastings' Boys High School in front of a fervent home crowd. The Porter Group are proud supporters of Hamilton Boys' High School 1st XV Rugby.

HBHS SEVENS TEAM MAKES HISTORY

In December the HBHS Sevens team has won the National Condor Sevens title for a history-making fifth time in a row. HBHS beat King's College 27 - 12 in the final, and now possess the longest winning streak in the competition's history, having held the title since 2012. This is the seventh title that HBHS has won, more than any other school.



Porter Group were involved in the Agricultural Day at Ohaupo Shcool on the 18th of October 2019

It was a fun day for the whole community. Pictured here is Dan Phillips who won the third place prize.



After a successful season competing at the most famous race tracks in Europe, young Porter Group supported driver Liam Lawson is home to race for New Zealand in the 2020 Toyota Racing Series.

The 17-year-old from Pukekohe will lineup against a full field of international drivers to mark the new era of the Toyota Racing Series (TRS), which will debut an all-new car when it begins in January 2020.

Featuring the halo safety device and a new 2-litre turbo-powered engine, Liam starts the series as the defending champion and current NZ Grand Prix winner.

Prior to coming home, Liam finished runner-up in the Euroformula Open (EFO) championship. He's now finished 2nd overall in 3 of the 4 internationals championships he's contested over the past two years.

Added to that, Liam has won a race on debut in every car but one that he has so far raced in his short career.

Alongside the EFO success, Liam was also the youngest and least experienced of the drivers in the new for 2019 FIA F3 championship, that raced at 8 rounds of the European Formula 1 season.

Against the odds, Liam scored two podiums - 3rd at Silverstone at the British Grand Prix, and 2nd at Monza during the Italian Grand Prix, in the 30-car field of the world's best young drivers.

He kept his best F3 performance of the year until last at the Macau Grand Prix on November 17th. Liam drove from 20th on the grid to 7th, making the most passing manoeuvres in the race, held on what is regarded as the most dangerous street circuit in the world. Hampered in qualifying by red flag stoppages and a blocked track, he was until set a fast lap and therefore started near the rear of the field.

Last month, in the Driver-database.com rankings, Liam was named the top 17-year-old driver in the world from over 200 drivers of both single-seaters and saloon cars under age 22. Last year he was ranked top 16-year-old by age and was the only driver apart from Lando Norris (McLaren Formula 1) to retain a No.1 age ranking this year.

Aside from his success this year, Liam is hoping to start 2020 in a winning way and is looking forward to racing at home in what may be the last opportunity to do so for some time ahead.

"I had a special time earlier this year in the Porter Group Toyota and I'm so proud to be able to race in the same colours again next year," said Liam.

"Porter Group has been supporting me



Liam won 1st place in Barcelona

since I started racing overseas in Australia at 15, and to have the opportunity to do it all again is a privilege. I look forward to seeing everyone at the race tracks this summer."

TRS starts at Highlands (Cromwell) 17-19 January, followed by Teretonga, Invercargill a week later. The first North Island round is at Hampton Downs, Waikato, 1st-2nd February, then the next weekend at Pukekohe, with the NZ Grand Prix the grand finale at Manfeild, Fielding on 15-16th February.

BACK HOME TO RACE AFTER A BIG SEASON IN EUROPE





MUKKA MOTORSPORT AND PORTER GROUP

Porter Group are happy to support Benji Sneddon and Daniel Hole's 'Mukka Motorsport' Super Stock Race Cars

The guys at Mukka Motorsport come down to Porter Group HQ recently for a meet and greet with the staff, who had a wonderful time admiring the stock cars and chatting with the race drivers and team.

That month at Wanganui Oceanview Speedway Mukka Motorsport had a great run. In race 1 126k came in 1st, 471k 2nd and 371k DNF as steering box broke. In Race 2; 126k was placed 1st and broke the lap record which had remained unbroken since 2006! 471k got 4th and 371k 6th.

Keep up with the team via Facebook at www.facebook.com/MukkaMotorsport



PORTER HIRE INTERNATIONAL SPRINTCAR SERIES

Western Springs Speedway hosted another successful "Porter Hire Sprintcar Series" as well as "Porter Hire Sprintcar Series Teams Racing"

With the final round being held on Dec 14th 2019



PORTER GROUP USA



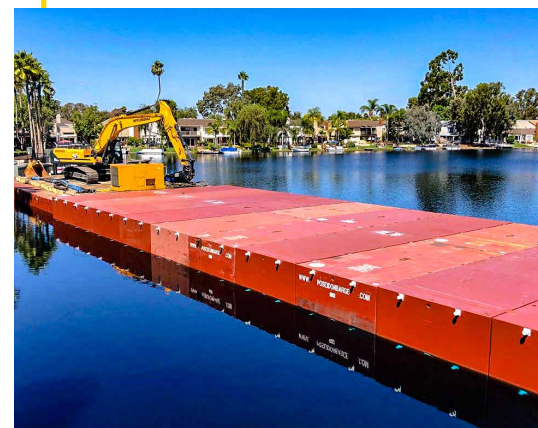
The thumb feature on the end of the stick is great for picking up material like this sidewalk being demolished here. We carry all different sizes of excavators that include a thumb so you can find the right fit for your job site!



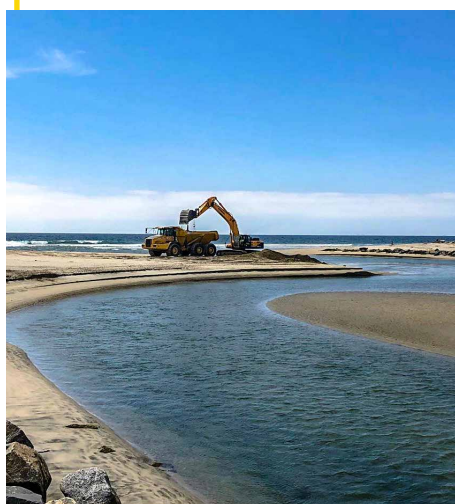
Sometimes under the rainbow there's still gold like these two @belltrucksamerica articulated trucks!

Up and over. Easy does it. Not only does the Hyundai HX235 boast compact power but it is easy to load and haul as well!

A perfect day to be on the water.



Even though summer is over, the machines still like hanging out at the beach. Hauling sand and soaking up the sun. @belltrucksamerica #B50D

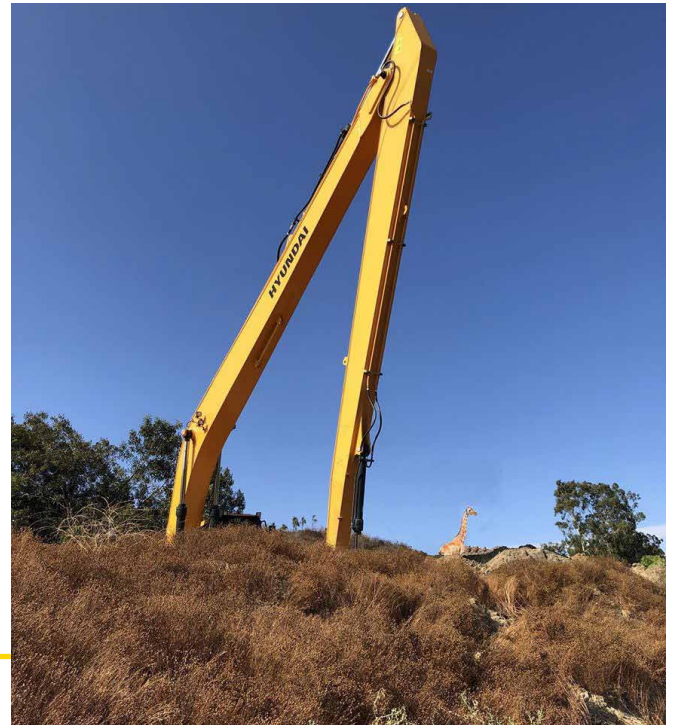




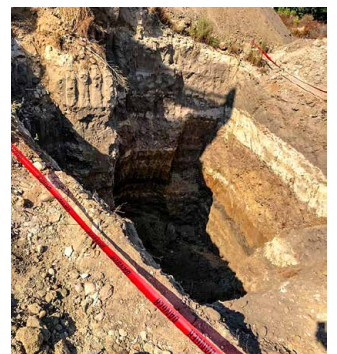
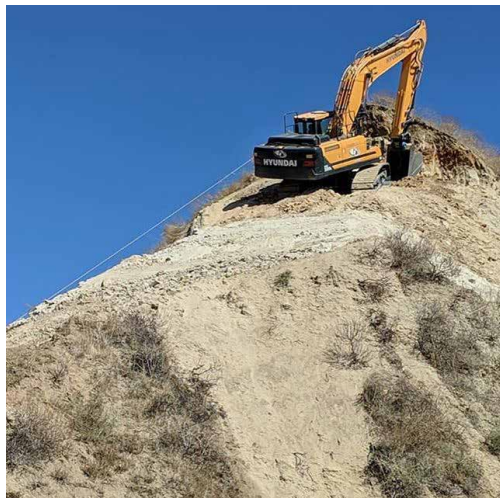
The Hyundai HL955 is the perfect tool for a job like this!



A Hyundai HX380L moving mountains. Be careful out there my friends. Wear your seatbelt and always operate in a safe manner. #safetyfirst #Hyundai #HX380L #movingmountains.



A Hyundai HX220LR hanging out at the San Diego Safari Park with it's Giraffe relatives.



The Hyundai HX220 keeps you cool in harsh conditions.

Porter Rents received their first EPFC or Electric Positive Flow Control HX220LR long reach excavator. This technology results in the improvement of fuel efficiency and controllability by a flow reduction technique for excavator operations.



PORTER HIRE AND COMMERCIAL & INDUSTRIAL PROPERTY PTY LTD



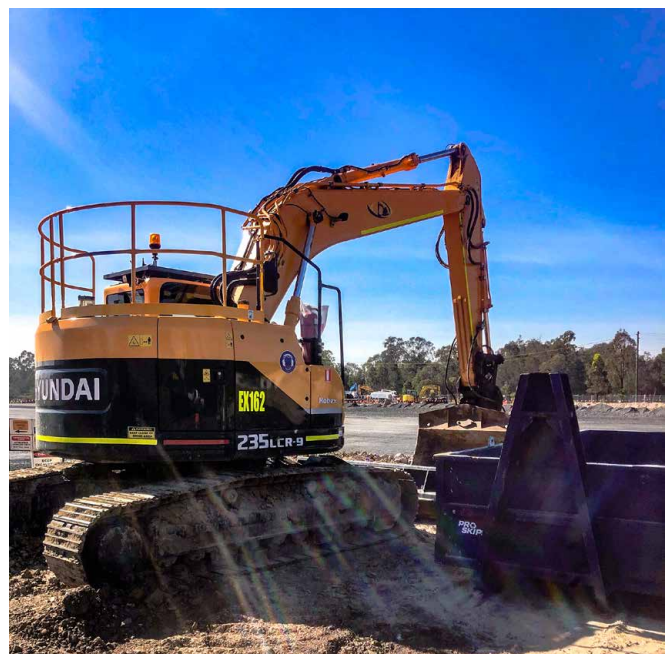
CIP is a property development, design and construction business including consulting and advisory services based in Sydney and now operating in 5 states with a growing staff of over 150 people.

Porter Hire has been doing business with CIP over the last year and a recent project was the New Linfox Distribution centre in Willawong. CIP civil originally started early in the new year removing all of the contaminated soil and replacement of new soil. This has taken almost 12 months removing over 40,000 cubic metres of soil.

CIP needed a company where they just called one number to get all their hire needs sorted and they found that with Porter Hire who provided reliable machines to be there on time and in good working order. In this project Porter Hire supplied with a Terex TA300 dump trucks, Bomag 19 ton rollers and Hyundai R480LC-9 and R235LCR-9 excavators.

CIP comments that Porter Hire delivered what they promised, solutions based hire company where the site manager only made one call and everything was sorted.







SAND & SCIENCE

At first glance, when you're a major quarry company extracting material from the ground, the idea of 'futureproofing' might seem a little at odds with your central reason for being. Well, nobody told Queensland's Rock Trade Industries. They're all about the future.

Established 12 years ago by Allan Payne, Rock Trade Industries now operates across three quarry sites around 100km inland from Brisbane at Helidon and Westbrook, both on the outskirts of Toowoomba.

While the Westbrook hard rock quarry is a site the company has recently taken over and spent the last 12 months bringing up to operational standard, the bulk of Rock Trade Industries' output comes from their large-scale sandstone quarry at Helidon.

Sandstone plays a big part in the history of Southern Queensland, with many of Brisbane's most elegant Victorian and Edwardian buildings rendered in the stuff. While the 1920s saw the last sandstone

consignments extracted by hand, quarry sites like Rock Trade Industries' central operation have been in use since the 1860s.

Even here at Helidon – and with so much history underfoot – the company's New Product & Business Development Manager, Greg Lennox, says they've barely scratched the surface in terms of the life of the site.

"We're about 30m into the ground at the quarry now, so there is probably still 175m further to go. But even though we have decades-worth of usable material here, we have always been very focused on both our remediation strategy and working as

efficiently and sustainably as possible in the meantime," he says.

"Basically, quarrying is a disruptive industry – there's no two ways about it. But utilising everything, being as innovative with the products and by-products you're working with as you can be and using equipment that allows you to put your best foot forward, are all vital components of operating successfully in this industry."

Rock Trade Industries' frontline 'high cycle' fleet is predominantly made up of Hyundai machinery, sourced through distributor Porter Equipment. In all, the company run 10 machines from the Korean manufacturer; a mix of big Hyundai



HL770-9 and HL780-9 wheel loaders, alongside mid-range Hyundai R320LC-9 and R380LC-9 tracked crawler excavators.

Like the actual material being extracted, 95% of the machine fleet is situated at the main Helidon quarry, although as the Westbrook facility comes online, several units will be shifted there over time.

Greg says he has been impressed with the Hyundai mobile plant the company is running. While factors such as ergonomic cabs, available power, bucket volumes and mechanical durability are easy boxes to tick, running a heavy equipment fleet of this size still needs to measure up against the overriding principles the company operates by.

"We pride ourselves in being very innovative, but also very transparent in

how we operate. If we say we strive to work in a particular way, that's what we'll do. Our basic philosophy has always been 'People, Planet, Profit', in that order.

"For me, the biggest benefit of running new equipment from Hyundai has been the reduction of fuel burn on our 'high cycle' fleet. These are big machines doing big hours, but despite this we have seen a dramatic decrease in diesel usage; down from around 60-litres per hour to just 27-litres per hour.

"We want to be seen as a company that works as sustainably as possible within the parameters of our core business, and it's factors like that that really make a difference," says Greg.

The machines certainly do work hard. Greg says that sandstone mining is tough

going because there is generally so much wastage in extracting the basic mineral. For every thousand tons of aggregate, a 15-20% usable return is the reality.

This is where the futureproofing comes in.

Greg says that Rock Trade Industries has invested intensely in material research around sustainable utilisation of every component of the sandstone extraction process. Greg believes the sand found inland from the eastern seaboard of Queensland to be among the purest in the world; extracting quartz from the basic aggregate being something the company has worked hard to perfect over time.

Furthermore, Rock Trade Industries is actively working with the University of Southern Queensland on a large geopolymer research project. Greg





explains that geopolymers are inorganic materials that bond non-crystalline substances; essentially the glue that holds sandstone together.

The company's work in this field has led to international interest from study groups looking for more efficient ways to make cement. And there are plenty of other uses for this product besides.

"Our accountability to the public, to industry and to our stakeholders – both within the quarrying industry and beyond – means that we need to be very careful

about our machine choices," says Greg.

"We have had delegations visit us from universities and research institutes in the United States, Korea and Japan, to name a few. Yes, these delegations are coming here to Helidon to see what we're doing from a product diversification point-of-view. But having new machinery that is considered to be a cut above is a compelling part of the way we conduct ourselves as a responsible and accountable operation.

"And, of course, the Hyundai machinery we are running has proven itself while

doing the hard yards every day so that our company remains capable of meeting customer expectations. At the end of the day – and above all the scientific research – we need to make sure our team can put food on the table.

"Through Porter Equipment, Hyundai machinery gives us the value and ability to not only do business day-to-day, but also to help us establish the next chapter in our business's story. And the next chapter is something we're certainly pretty excited about."





Words and images by Lyndsay Whittle

PROVING ITS WORTH

Madill's purpose-built logging equipment has set the standard in performance and productivity for Wanganui-based Shawn Hawkes and Katrina Howells

The three components of having good staff, reliable equipment, and service-conscious suppliers are well-recognised as being a recipe for operating a successful business, with the maxim taking on a whole new level of importance when you own two businesses that are separated by a distance of around 600km.

Add into the mix the fact that by nature, logging operations are generally carried out far away from city centres, the reliability-plus-service quotient becomes even more important.

Wanganui-based couple Shawn Hawkes and Katrina Howells own and operate Hawkes Harvesting in Wanganui and Tree Co in Whangarei, employing up to 25 staff and owning a large inventory of logging equipment.

Shawn started out in business for himself in 2012 at the age of 18 with a second-hand Hyundai R210LC-9H/C machine, supplied by Porter Equipment. The machine proved to be extremely reliable, and the on-the-ball service he received from the longestablished Porter Group, coupled with an increasing workload, saw to it that it wasn't very long before the purchase of several other Hyundai machines from Porter Group's stable would follow. Fast forward to 2019 and the Hawkes Harvesting/ Tree Co combination had amassed an impressive fleet, which includes a fleet of 4x4 utes, bulldozers, haulers, excavators, and other associated forestry equipment.

When it became apparent that another harvesting machine was needed for his ground-based crew for the Wanganui operation, there was no doubt in Shawn's mind as to which supplier he was going to call.

Paul Gorrie, Porter Equipment's upper North Island territory manager, had previously put in a lot of time making sure Shawn purchased the best machines for his application when Hawkes Harvesting added a Hyundai R250LC-9 H/C and a Hyundai R290LC-9 H/C to its fleet a couple of years ago, so Shawn knew that he was going to get the right advice when he picked up the phone to call Paul to talk about his next acquisition.



The engine is easily accessed for maintenance



The cowling tilts to 90-degrees, turning it into an enclosed platform

After performing the all-important number crunching part of the exercise and giving consideration to operational practicalities such as optimal excavator/harvesting head compatibility, the two men decided that a Madill HT 2250C self-leveller matched to a Woodsman Pro 750 attachment would best to meet Shawn's needs.

Purpose-built

Having been in service for four and a half months now and with 900 hours under its belt, the Madill/ Woodsman combination has performed well for Hawkes Harvesting,

putting big smiles on Shawn and Katrina's faces.

However, it's not just the company directors who are pleased with their purchase; crew foreman Paul Cleeve, who to date has spent the most time at the controls of the Madill, is every bit as pleased with its performance as his bosses are. Paul reckons there's a lot to like about the Madill. "There's quite a bit going on at any one time in the cab when you're halfway up a steep slope, and you have to do quite a bit of multi-tasking to get not only the machine but also the better part of four tonnes of

the harvester/processor in precisely the right spot to process a tree" he says. He adds that the Madill's controls are smooth to operate, making his job a lot easier and safe as well. One particular safety feature of the Madill is that the speed its controls operate at can be customised to suit the requirements of each individual operator.

The manufacturer has given further consideration to the operator by fitting the machine with a large 32mm-thick bulletproof-glass front screen. With a combined weight of nearly 40 tonnes (36 tonnes for the Madill and 3.7 tonnes

Crew foreman Paul Cleeve says the Madill's controls are smooth to operate

Shawn Hawkes and Katrina Howells





The Madill/Woodsman combination, weighing nearly 40 tonnes, is extremely manoeuvrable

for the Woodsman 750), Paul says the combination is extremely manoeuvrable, with the Madill's track length being pretty much spot-on, giving well-balanced weight distribution between the machine and the harvester/processor head. When the boss was asked if he still gets to climb in behind the controls these days and if he'd operated the Madill, Shawn said that he occasionally stands in for operators who are off sick or on holiday, but he said that it was Paul who'd spent the most time in the cab of this particular machine.

Both Paul and Shawn said they were very impressed not only with the Madill's performance and its user-friendly operation but they also think it's an easy machine to service due to the configuration of the electrically-operated tilting engine cowl.

While they joked about greasing and servicing being a necessary evil, they agreed that the people at Madill had paid a great deal of attention to making this aspect of machine ownership just that little bit easier. The cowl tilts to a full 90-degree angle, turning it into an enclosed platform in which a full service of the engine and associated components can be carried out safely.

There are a host of other features, including a continuous 360-degree rotation of the processing head and an on-board fault diagnosis for both the head and base machine, concealed and protected yet readily accessible hose lines. In a nutshell, Shawn and Katrina reckon they've made the right choice in having Porter Equipment supply them with their new Madill HT 2250C and the Woodsman Pro 750.

The last word, though, goes to foreman/operator Paul Cleve who says that when you spend up to 12 hours a day, five days a week in a machine, it needs to be comfortable and operator-friendly, and the Madill does an excellent job of making that happen, he says.

Harking back to those initial conversations with Paul Gorrie when Shawn and he discussed the merits of the Madill/Woodsman Pro 750 combo, Shawn says it's a decision he's pleased he made, as the Woodsman has proven to be well-matched to the machine that drives it. He says that at 3.8 tonnes, the relatively light harvester/processor is designed to be paired with a 24- to 35-tonne base machine, so being paired to his 34-tonne Madill is ideal, he reckons.

WRECKING DIVISION



Back in the early days Porter Parts known then as Eagle Spares started the dismantling of heavy machinery in order to offer second-hand parts solutions to clients nationwide.

Since then the wrecking yard formally located at the old site in Te Rapa, Hamilton has seen thousands of machines & used spare parts come and go.

When Porter Group NZ headquarters moved to the new site our wrecking division was relocated to Huntly where we continue to dismantle heavy equipment in order to offer used parts solutions to our clients not only here in New Zealand but also in the Pacific Islands and Australia.

With Equipment & Parts arriving on a regular basis our dedicated team are on hand to assist with all used parts enquiries.

WRECKING DIVISION TEAM



Shaughan Land
Wrecking Manager



Former Wrecking Yard at Te Rapa



Stephen Hayman
Yard Technician

New Huntly wrecking yard



Ian Murray
Yard Assistant

AH LIKI CONSTRUCTION LTD SAMOA

In August this year Ah Liki Construction in Samoa purchased their first units of Bomag Light Equipment from Sam O'Brien, Porter Parts Albany & Export Parts Manager. On Sam's latest visit to Samoa she visited the project site where Ah Liki Construction have put their new Bomags straight to work on the new Maliolio bridge, this bridge is the first of its kind to be constructed on Savaii Island being a concrete arched and box bridge and 1.5km of new roading.

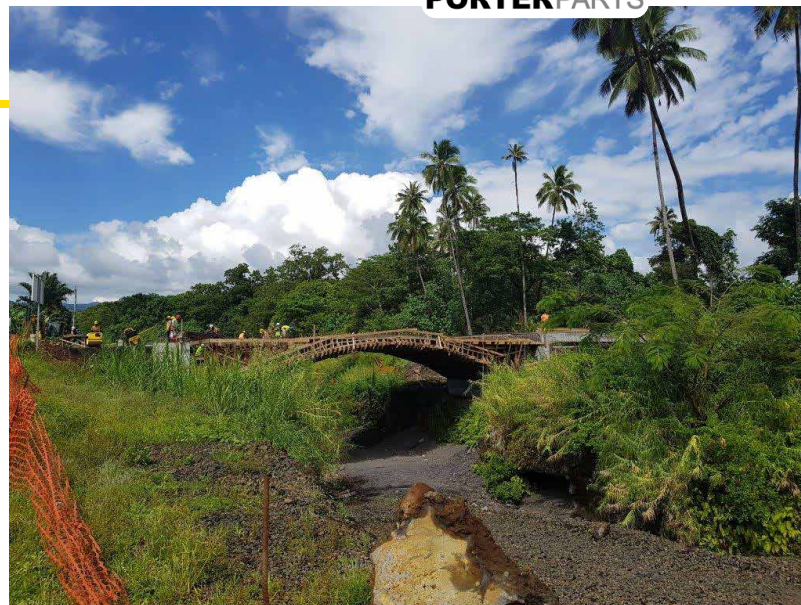
Over the last 10 years a lot of lives have been lost due to flash flooding when people have tried to cross the river. The existing Ford Bridge just down the road from the project site made it very dangerous for vehicles and pedestrians alike especially during the heavy rain season.

Due to the nature of the site being quite steep, Leonardo Ah Liki (Owner and General Manager) engaged with Sam for a solution to site compaction and purchased a Bomag BW75H Double Drum and BW71E-2 Single drum roller from our Bomag Light Equipment range to get the job done.

Leonardo Ah Liki has overseen operations for the company incl. estimating, administration and procurement ranging from crusher plant operations, building construction, roading works, block manufacturing and concrete ready-mix operations. With over 30 years' experience Ah Liki Construction now employ close to 100 staff.

Ah Liki Construction Ltd are always looking for new and more effective ways to complete the projects and work that they do, Porter Group NZ are working alongside Ah Liki to help them achieve this by supplying Parts, Product & Machinery support where needed.

Porter Parts now stocks a full range of Bomag Light Equipment so if you are in the market for Light Equipment please contact your local Porter Parts branch.



FULL UNDERCARRIAGE CHANGE OVER

Porter Parts Manukau recently completed a full undercarriage change over for Alex Corbett of Corbett Contracting on his Kobelco SK210. All parts were supplied and fitted by our team at Manukau and Alex also requested while the machine

was with us for the counterweight to be re-painted and repairs to the rock bucket to be done. Our team also offered a free Cabin valet before the machine headed back off to work.

Before



After





WHEN FAILURE IS NOT AN OPTION

Kiribati Government in the Pacific Islands currently operate two Hyundai loaders supplied by the Porter Group that are used at their Waste Disposal plant on the Island. Due to the remote location and nature of the environment these loaders are working in, if a tyre failure should occur, then downtime of the equipment is not an option. Recently Sam O'Brien, Porter Parts Albany & Export Manager supplied specialised solid flex tyres and new rims for their HL740-9 so future tyre failure and down time was avoided.

Some of the new gear added to the Field Service fleet at Porter Mechanical

 **PORTERMECHANICAL**





Porter Access Christchurch customer **Phoenix Steel** using **two Haulotte H16TPX stickbooms** on site at the new science laboratory being built for the Oceania Dairy Factory in Glenavy.

Porter Access in Christchurch recently supplied a **Haulotte HA20 RTJ Knuckleboom** to erect signage at the recently built **Ao Tawhiti Unlimited Discovery School** in central Christchurch.



Porter Access in Auckland are supporting a Childcare Centre in Hobsonville with the **Haulotte Optimum 8 Electric Scissors**.

SOL Screening and Crushing is currently working in the Clarence River south of Blenheim. They are providing material in support of NCTIR operations, and a number of other projects in the area. **Porter Hire's Hyundai R380LC-9** has given them a boost they need as the production rises to support these projects.



Renner Contracting are operating a **Porter Hire Hyundai R145-9** with a compactor head fitted. The operator can drive around 1800 posts per day into this vineyard development in the Awatere Valley, Marlborough.



A **Porter Hire Padfoot Roller** working on rebuilding a damaged stop bank near Blenheim. The stop bank was damaged as a result of the 2016 Kaikoura earthquake, and **Simcox Construction** has been instrumental in making these flood zones safe again.





Porter Hire Cromwell's recently supplied our new **CAT730c Dump Trucks** to **General Earthmovers**, seen here on their way to Alexandra to work on a new subdivision in the pines.



Our new range of **5000L watercarts** are ideal for tight sites such as this one in Te Awamutu. Only needing a class two licence they are proving popular with operators who enjoy the aircon comfort and auto transmission. Cab controlled front and rear sprays give great coverage as this picture shows.



Rakaia Engineering have hired from Porter Access Palmerston North the **Haulotte HTL4014 4WD Telehandler** to help with the building 4 large grain silos in conjunction with a grain drying plant. The HTL4014 was picked for its impressive 4WD systems with crab steering combined with being able to lift 4 ton load and has a 14 m lift height, ideal for the projects requirements.

Porter Haulage driver **Shaun Smith** caught a bit of spring snow passing through Waiouru driving "Rags to Riches" in October.



A Porter Hire **Bomag 213 padfoot roller**, on hire to **Crafar Crouch Construction** (Picton). This roller is being used to prepare the abutments to the Opaoa bridge on SH1 just north of Blenheim.

SUB-DIVISION PROJECTS IN NEW PLYMOUTH

The development of semi-rural residential subdivisions is continuing in New Plymouth. Cowley Farms are working on a development directly behind the Fitzroy / Waiwhakaiho area of New Plymouth. The land has extensive coastal views on the upper reaches of the subdivision making these sections highly sort after. Future development of the area including the removal and redevelopment of the disused Ravensdown Fertiliser site into a large retail a cinema complex. The project will take up to 2 years and Cowley's are seen using Porter Hires Bomag BW213DH-5 construction roller complete with sheep foot shells fitted.

On the other side of New Plymouth in Westown, the Greensil Family Trust are developing a small inner city urban residential subdivision including earthworks and engineered retaining wall. With few remaining parcels of land now available in the city area for development, many of the difficult sites are now all that is left to be subdivided with this being one of them due to the slopes and access into the valley itself. Currently on this project they are hiring a Hyundai R80CR-9 excavator complete with an auger drive, extensions and 600mm bit.



WINSTONE AGGREGATES



Porter Hire has been a long-term supplier to Winstone Aggregates throughout New Zealand, and have recently hired the new Hyundai HX480SL excavator and a Hyundai R290LC-9 to the Winstone quarry at Linton, just outside of Palmerston North.

The HX480SL is designed to be rugged and reliable for longer up time, reduced operating costs and improved productivity. A key feature of the new operators cab in the HX480SL is the convenient cluster of electronic controls and monitoring functions. The interactive monitor touchscreen colour display with centralised switches allows the operator to check and manage most features of the machine operation, switches and diagnostics, all in one convenient location, resulting in improved operator accuracy and efficiency. The ECO Gauge gives the operator instant fuel efficiency feedback as they work, and the monitor also provides detailed information on average hourly and daily fuel consumption. The Intelligent Power Control (IPC) regulates the hydraulic pumps, depending on the job being undertaken and by simply selecting the speed mode; balance mode or efficiency mode to tailor the machines performance. The Advanced Around View Monitoring system gives a 360 – degree overview of the immediate working environment to prevent accidents and includes the Intelligent

Moving Object Detection technology that senses and warns when people or objects come within five metres of the machine.

The operators at the Linton have been very impressed with the performance of the HX480SL. They commented on the comfit of the cab with extra foot room over and the 360 camera views with the swing line has made working near the face and the edge of the quarry a lot safer plus picks up and alerts them of moving objects and people in his cameras view. There has also been a noticeable reduction in fuel consumption.



LANDING AN ODD JOB

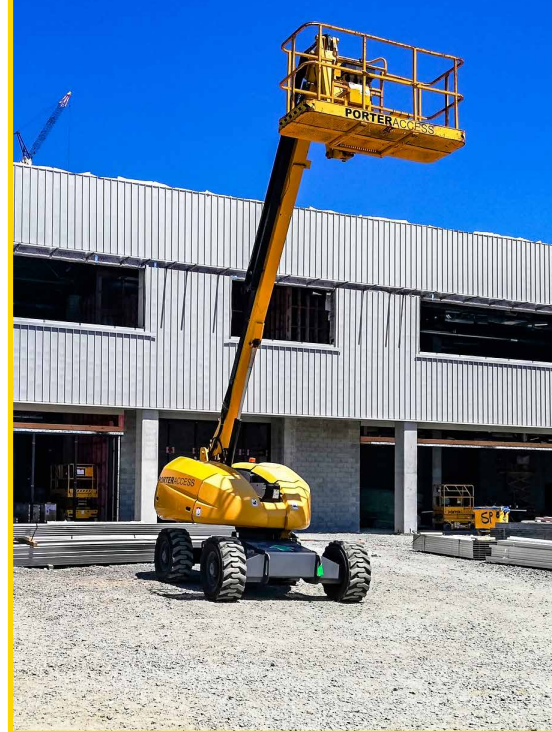
Porter Haulage in Christchurch had an unusual delivery recently.

Two Aero L-29 Delfin jet aircraft from Christchurch airport to North Canterbury where they are going to be restored. These planes were developed and manufactured by Czechoslovakia aviation manufacturer Aero Vodochody. The L-29 was the standard trainer for the air forces of the Warsaw Pact nations from the 1960s onwards. In excess of 3,000 L-29 Delfin trainers were produced, of these, around 2,000 were reported to have been delivered to the Soviet Union.

These particular planes have been at Christchurch airport as training planes and have been taken on by a collector who intends to restore them and get them back in the air.

Local Porter Haulage drivers Jake Taylor in his T609 Kenworth and Kevin Graham-Hayes in his Western Star travelled in convoy for the journey.





ORMISTON TOWN CENTRE BEGINS TO TAKE SHAPE

One of Auckland's fastest growing communities is about to undergo a significant transformation, with the construction of a new \$200 million-plus town centre being built from scratch in southeast Auckland. Plans for the Ormiston Town Centre, in a newly created urban environment that includes retail stores, restaurants, a gym, movie theatres, a library, an aquatic centre, and a range of public open spaces that will connect to the neighbouring park.

"The Ormiston community is experiencing phenomenal growth, and the Town Centre is going to be a massive transformation for the area," said Todd Property Managing Director Evan Davies. "It's going to create an exciting new focal point for the community, and we are really excited to see it begin to take shape." Built on a 4.5ha site beside Barry Curtis Park, construction is now underway for the 40,000sqm Town

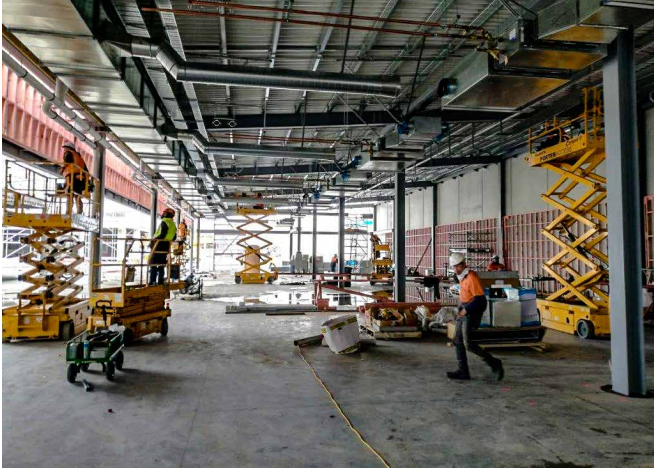
Centre, which will include 100 retail and commercial tenants, a three-level parking structure and four major anchor tenants, including The Warehouse, a HOYTS complex, the existing PAK'nSAVE, and an additional supermarket.

Designed by NH Architecture of Melbourne and Jasmax of Auckland, the centre has a contemporary architectural design, setting it apart from traditional closed-in suburban malls, or big box retail developments. Instead, the Town Centre will integrate seamlessly into the urban landscape via streets, alleyways and public open spaces. Compact and pedestrian friendly, the centre will have a strong focus on food and entertainment, featuring a dining lane, a quality food hall, a restaurant precinct, along with an 8-cinema entertainment complex. "Ormiston Town Centre is not just about bringing retail to the area. It's about creating new community spaces,

where people can come together to eat out or just relax with friends and family, and its location next to Barry Curtis Park makes it very unique," Mr Davies said.

Todd Property Group is working in partnership with Auckland's redevelopment agency Panuku to develop a 19ha site in Ormiston, which includes residential housing and the Town Centre. Located 24 kilometres from Auckland's CBD, about two thirds of the overall Ormiston development has either been completed or is underway, including commercial spaces and 63 terraced homes, with another 66 under construction. The area has proved popular with families, with houses currently selling for between \$650,000 and \$950,000, depending on their size. Panuku Chief Executive Roger MacDonald said: "This is about taking a greenfield site and turning it into an entirely new master planned community. In time, Ormiston





could provide a blue print for how we take other townships in Auckland forward to provide for the growing population."

Savory Construction in partnership with Scarbro Construction are delivering the new Ormiston Town Centre - Retail Shopping Centre project. Porter Access have had a long-term relationship with Savory and through this project are working with Scarbro for the first time.



BLESSING OF NEW MACHINERY

Tui Jack-Ainsley accompanied by other members of Waihi Community Marae joined us on site Tuesday morning of last week to bless three pieces of heavy equipment that have recently arrived on site. We are very fortunate to have the help of Waihi Community Marae members who go out of their way to assist us and do everything possible to fit in with our schedules. Nga mihi ki a koutou katoa.

We bless large pieces of equipment to remove any tapu. The blessing removes anything negative the equipment may have brought with it to site.

We don't know what may have happened on or to this piece of equipment prior to us owning it. With the help of kaumatua or kuia, any tapu is removed, making it safe for us to use and ensure it is kept in good health.

Previously, we have also used an Anglican minister to bless machinery prior to its use.

As well as the spiritual and cultural aspects of the blessing, these events also provided us with the opportunity to reflect on how we can all keep ourselves and our workmates safe.

Porter Hire has been supplying hire to both the opencast and underground for over 28 years. Currently have Volvo L120G Loaders the grader operating underground all fitted with fire

suppression. Above ground we have HL770-9 loaders on the surface, a crusher and a purpose-built watercart.

Story via OceanaGold



DRG CONTRACTING

DRG Contracting is a well-established earthmoving company based in New South Wales. Their operations cover all aspects of earthworks and they have worked on some of Sydney's newest developments and civil engineering projects.

Porter Hire having worked with DGR for nearly 3 years and recently supported them on Moorebank Intermodal project where DGR constructed a weigh bridge, wheel wash, main site access and a car park. Over a 6-month period Porter Hire supplied a range of equipment including: Bomag 13T rollers, Hyundai R145-9 and R320-9 Excavators, Cat 12M Graders and ASV RT75 Posi tracks.

DRG commented on how using Porter Hire for all our additional machine requirements makes life easy for them, they know that each machine is going to be fitted with all the key features they require. DRG values the long-standing relationship with Porter Hire team that continues to strengthen with each project. Dealing with the Porter Hire team is like dealing with their own internal people, they always go above and beyond to make sure the process is runs seamless for them.



PORTER CRANES AND JOHN CARTER CONSTRUCTION

Porter Cranes were at the Hamilton Gardens in early November lifting 13 concrete panels into place for John Carter Construction for the new Baroque garden that is the latest themed garden to be developed. Darryl Johnstone and Nick Allatt were the crane operators charged with the task of lifting and placing the panels that will form the façade of a chateau that will look across a large pond

when the project is completed.

The Hamilton Gardens are a 54 hectare park based on the banks of the Waikato River that is one of the most visited tourist attractions in the Waikato. The main attractions on the site are the multiple themed gardens that continue to grow in number and variety.



RECENT DELIVERIES



JW Neill Contractors Ltd, in Dairy Flat north of Auckland have again purchased a new **NC SW9 Site Dumper**. This joins one they purchased last year and will be working on civil sites around Auckland moving material. Owner John Neill was so impressed with the first one he brought a second.

Paul Gorrie (0276 864 627) - North Auckland & Northland



Mold Logging Ltd, based in Kaitia, have recently taken delivery of a new Madill 2850C. Seen here working in Omanaia Northland the Madill 2850C is fitted with a **Duxson Grapple**. Owner Tim was keen to get the Madill working and his staff have it loading trucks off the skid. This Madill joins a Madill 124 with the same crew.

Paul Gorrie (0276 864 627) - North Auckland & Northland



Endless Metals have taken delivery of another new **Hyundai R210W-9MH** Material Handler machine. The specialised Material Handler is fitted with a Hyundai Orange Style Grapple for scrap metal work. Stuart Kagan and the team are extremely busy and the new R210W-9MH was up and working minutes after delivery. This joins another R210W-9MH on-site and will be working sorting and loading containers for export.

Paul Gorrie (0276 864 627) - North Auckland & Northland

Atlas Concrete Ltd, have just taken delivery of a new **Sandvik QE241 Scalper Screen**. Seen here at their Concrete Recycling Plant at Silverdale, north of Auckland. The new Sandvik QE241 Scalper will be used to size already crushed recycled concrete onsite. Andrew Collie was impressed with the quick set up, ease of operation and screening and then be folded up ready to move. It will be moved to the various Atlas sites around north Auckland as required.

Paul Gorrie (0276 864 627) -North Auckland & Northland



Ray Flavell from **Flavell Logging Ltd**. in Taupo has recently added new a custom-built **Hyundai R480LC-9** complete with a Woodsman Pro850 processor to his Gisborne logging operations. Ray engaged PFS Engineering in Hamilton to build a Taylor-made hydraulically operated engine bonnet system to compliment the full guarding package including an APC (All Purpose Cabin) on his latest new machine. "I wanted to build something a bit special for this new processor base and believe that I've achieved what I set out to do. The machine is performing way beyond my expectations & has plenty of grunt to handle the heavy East Coast stems with ease." says Ray. Ray, as one of our larger Hyundai clients, the Porter Group appreciates your continued business.

Roger Pedersen (0272 460 302) - Hawkes Bay/Gisborne/Taupo

RECENT DELIVERIES



Kerry Jenkins & his partner Vanessa have just taken delivery of a new **Hyundai R110-7** to aid their expanding tree felling, timber milling & firewood business. They purchased a new Hyundai R140LC-9 a few years ago & needed another excavator to reduce shifts from existing job sites to start a new one, &

then returning to complete the job. Having had a very good experience with their initial new Hyundai, Kerry & Vanessa had no hesitation in making the decision to purchase another new machine. Kerry & Vanessa, your business is very much valued & appreciated.

- **Roger Pedersen (0272 460 302) - Hawkes Bay/Gisborne/Taupo**



Ricky & Leanne Kuru have recently taken delivery of a new **Madill 124 Swing Yarder** for their ever expanding logging operations on the East Coast. Currently situated inland from Tokomaru Bay, the new hauler is being operated by Kane Withers, who having already had extensive swing yarder experience is taking to his new machine without any issues. Porter Equipment are very appreciative of the business that Kuru Contracting Ltd. have done with the Porter Group. Sold & delivered by territory manager, Roger Pedersen with valued assistance from Murray Podmore, Porter Group Madill Product Support manager.- **Roger Pedersen (0272 460 302) - Hawkes Bay/Gisborne/Taupo**



Stuart Bell (pictured on his new excavator) has recently purchased a new **Hyundai R17Z-9** trailer & buckets package to replace a Hyundai R16-9 that had been providing sterling service for a number of years. Stuart uses the machine for small jobs in the Mahia/Nuhaka area & his operator is very pleased with the zero tailswing capability of the new excavator enabling close operation to buildings, fences, etc. Stuart, your continued business with the Porter Group is much appreciated.

Roger Pedersen (0272 460 302) - Hawkes Bay/Gisborne/Taupo

Atom Heavy Hire Ltd from Whitford, South Auckland owner **Stu Cowdell** has added this **Bomag BW151AD-50 Double Drum Roller** to his expanding Hire fleet.

Doug Ball (0274 368 297) - Auckland



Thanks to Gary Edwards the owner of **Heards Landscape Ltd** in Papakura, South Auckland. The new **Hyundai HL730-9 Loader** is been put to work sorting many different products they offer from their busy depot.

Doug Ball (0274 368 297) - Auckland



Ihumatao Quarries Ltd of Auckland puts to work their new **Furukawa FXJ375 rock breaker**, this model suits excavators from 26 to 39 tons with a pick diameter of 155 mm

Doug Ball (0274 368 297) - Auckland

RECENT DELIVERIES



John Fillmore Contracting Ltd of Auckland have two new **Hyundai R60CR-9 Excavators** poised and ready to go to work. Another addition to their extensive fleet of earthmoving machinery.

Doug Ball (0274 368 297) - Auckland



Platinum Earthworks Ltd – Damion earlier this year purchased this well set up **ASV RT75** with Endraulic Dual Blade Dozer. The strong smooth running of the Posi-Track suspension together with powerful hydraulics, supported by a premium cooling package means Damion can plough through his work in comfort. Thanks Damion for your business

Steve Puddle (027 4943486) - Bay of Plenty & Coromandel



Extreme Diggers Ltd – After a good run from his older R145 Scott recently upgraded to this classy looking **Hyundai R145CR-9**.

The machine has been fitted out to meet varied applications and includes: PFS ROP's Cage with LED Lighting, Robur Chubb Thumb & Wide Tilt Bucket, Handrails, and additional plumbing to run various attachments including mulchers and augers.

Steve Puddle (027 4943486) - Bay of Plenty & Coromandel

Barry Heke Excavator Services – After Barry worked out the "Total Cost of Ownership" on his existing R145 it was very easy decision to upgrade with a new **Hyundai R145CR-9** machine and have confidence in the machines performance together with very low maintenance/running costs. To cover varied work for Barry's customers around the Tauranga region the machine has been fitted out with Tilt Hitch, Chubb Thumb, Handrails

Steve Puddle (027 4943486) - Bay of Plenty & Coromandel



Horne Bros have purchased one of the new **Hyundai FX3230G** factory built forestry machine with an ensign grapple. **Bernard and Matt** are very pleased with performance and climbing ability. "It makes complete sense when you consider cost of ownership says" Bernard.

Thanks Bernard, Amanda and Matt
Joshua Hunter (0274 816 52) - Wellington

Mt Heslington has just received their second **Hyundai R380LC-9** with the new Satco processor. Thanks to **Aaron** and his crew for the support over the past few years.

Joshua Hunter (0274 816 52) - Wellington



RECENT DELIVERIES

Two new deliveries for **Joe** at **Roesky Logging Limited**. Joe has taken delivery of one of the first factory built **Hyundai FX3230G** with ensign grapple. Joe has mentioned it is fantastic value for money and a no brainier to purchase. The price, service and availability can't be beaten. He has also added a new **Hyundai R380-9** with a 12,000 Log Max, the crew are very happy with the marriage of the 2 machines.

Joshua Hunter (0274 816 52) - Wellington

Raynor has taken delivery of a **Hyundai R35z-9** with an Digga Auger unit and A2 bucket package. The Hyundai was finished with a blacked out window tint to his delight. It looks fantastic. I would like to wish **RB Xcavte** all the best for the new venture .

Joshua Hunter (0274 816 52) - Wellington



Greg McDonald of **Ligar Bay Truck & Digger Hire** has recently upgraded his current **Hyundai R55-9** excavator for a new model. Greg's previous R55-9 served him and his clients well for over 4 years. The new machine will be used for landscaping, site prep and general contracting. Thanks Greg for your support.

Martin Talbot-Price (0272 702 121) Nelson / Marlborough



Neil Moratti of **Moratti Earthmovers Ltd** takes delivery of his new **Hyundai R55-9** from Taranaki Territory Manager **Dave McSorley**. Neil appreciates the features and value for money that Hyundai offers and has traded his last R55 on this new one.

Dave McSorley (0272 157 745) - Waikato/Taranaki



Wizz the **Birchfield Coal** (Darfield) operations manager puts his new **Hyundai HL770-9 Wheel Loader** through its paces, now with its 7m3 bucket configuration. They are impressed with this loader and how it handles the large bucket with ease. Thank you to the Birchfield Family for your continued business with the Porter Group.

Chris Toase (0272 742 914) Canterbury / West Coast



RECENT DELIVERIES



The team at **T & C Excavation** putting their new **ASV RT40** to work on a new section site in Rolleston.
Thanks **Steve and Sheryl** for your business

Peter Wells (0272 955 034) South Island



Roeske Mulch N Digs 2nd Hyundai R180LC-9 has gone to work straight off the truck posting up a new Hop Garden in Nelson.
Thanks to **Tony & Terena** for their continued custom.

Martin Talbot-Price (0272 702 121) Nelson / Marlborough



Gary Miller putting his new **ASV RT120F** through its paces mowing down scrub and wilding pines near Christchurch.
Thanks for your business Gary.

Peter Wells (0272 955 034) South Island

Francis and Thomas Gannon taking delivery of their new **Hyundai R60W-9S Wheeled Excavator**. This wheeled excavator has been put straight to work at their Tinamba farm, and also used for local contracting works in Wellington Shire district of regional Victoria.

Marc St. Ange (0419 713 482) South East Victoria



Congratulations Nick and operator "Rocket" on your new **Hyundai R210LC-9** Excavator. This girl is straight to work digging dams.

Justin Cooper (0439 101 257) Northern Victoria

Not every day you deliver a machine to a ferry terminal to go across to an island. Seen here a new **Hyundai R210LC-9** going to the French Island.

Justin Cooper (0439 101 257) Northern Victoria



RECENT DELIVERIES



Regional Contractors, Ballarat have recently landed their first **Ammann 1575 Trench Roller** which went straight out on hire.

"... feedback from our customers has been fantastic, easy to operate, smart safety features and we can't believe the grunt!"

Keil Davies (0448 155 145) Western Victoria

Congratulations to **Clenett Hire** on your new purchase of **Ammann ARX26-2**, and thanks to my team for getting these new machine builds turned around so quick. The ARX26-2 is a light class roller with heavy class performance. This machine has been spec'd with everything imaginable including GPS telematics and custom fleet colours.

"I am very impressed with Ammann's build quality and attention to detail. While cosmetically appealing for a roller, the machine performance and operator comfort of the ARX26-2 has been stepped up a level in this new - 2 series"

Keil Davies (0448 155 145) Western Victoria



A new Sandvik QJ241 jaw crusher sold, delivered and commissioned by Porter Equipment in Western Victoria.

Keil Davies (0448 155 145) Western Victoria



Great day to be out and about today with positive reports all round. Here's a customer's **Hyundai 480LC-9** loading one of their TA400's. Can't beat being out amongst it.

Keil Davies (0448 155 145) Western Victoria

Tasmania Mines in Hampshire Tasmania takes delivery of their third new **Hyundai HL780-9**. After commencing their partnership with Porter Group 3 years ago the Hyundai fleet on site continues to grow. Tasmania Mines own and operate on the Kara mine site, the primary source of the magnetite supplied to our customers worldwide. The mine site is located 35km south of the Port of Burnie in North West Tasmania so reliability and performance is critical to keep their operation moving. Stay tuned for more machines to appear on site and not just Hyundai.

Mark Salmon (0408 362 603) South NSW/Canberra



RECENT DELIVERIES

Southern Explosives Services takes delivery of another **Furukawa HCR1500EDII**, the reason? Performance! Recently the new HCR1500EDII went to Holcim's Lynwood Quarry at Marulan for a project and it drilled in ONE Day what a TWO Tamrock units (same size) could drill. Managing Director Brian Grigg commented "we can't go past the performance of the Furukawa and the investment that Porter's have put in with training their staff to provide back up and spare parts availability to our business is the best we have encountered and other brands could learn from"

Mark Salmon (0408 362 603) South NSW/Canberra



Andrew from **Complete Civil Construction** taking delivery of a new **Hyundai R17z-9 Excavator**. This mini is Andrew's 3rd Hyundai excavator and a welcome addition to his growing fleet.

Marc St. Ange (0419 713 482) South East Victoria



Patrick and Todd from **Sloan Sands** receiving their new **Sandvik QA335 Doublescreen**. This new screen replaced their existing unit at their Sandy Creek Quarry.

Timothy Sharrad (0408 386 196) South Australia



Royal Park Salvage took delivery on their new **Hyundai R320LC-9 Excavator**.

Timothy Sharrad (0408 386 196) South Australia



Brett Stephens of **Clearpath Vegetation Solutions** with his team in front of the new **ASV RT-120F Compact Track Loader**.

Timothy Sharrad (0408 386 196) South Australia



Delivery of New **Hyundai HL757-9 Wheel Loader** complete with hydraulic hitch and bucket modifications. This is **Brett's** second Hyundai added to his fleet with a HL770-9 in operation.

Timothy Sharrad (0408 386 196) South Australia

PORTERFINANCE

**PEOPLE YOU CAN TRUST...
BRANDS YOU CAN RELY ON...**

**Porter Finance, offering a competitive and hassle free finance
solution for customers purchasing plant from Porter Equipment
Chattel Mortgages, Leases and Rent to Buys**



▲ HYUNDAI
CONSTRUCTION EQUIPMENT

MADILL

SANDVIK

TEREX
TRUCKS

FRD

NC

ASV

AMMANN



PORTERFINANCE

AUSTRALIA NATIONWIDE

13 42 32

portergroup.com.au

HYUNDAI
CONSTRUCTION EQUIPMENT

FORESTRY FAVOURITE NOW FACTORY BUILT,

THE NEW FX SERIES

FX3026G

FX3026LL

FX3230G

FX3230LL

FX3632G

FX3632LL



PORTEREQUIPMENT

BRANCHES NATIONWIDE

0800 650 600

portergroup.co.nz

BRANCHES NATIONWIDE

13 42 32

portergroup.com.au